

## Retrospective Study

**Value of neutrophil-lymphocyte ratio in evaluating response to percutaneous catheter drainage in patients with acute pancreatitis**

Pankaj Gupta, Gaurav Chayan Das, Akash Bansal, Jayanta Samanta, Harshal S Mandavdhare, Vishal Sharma, Shano Naseem, Vikas Gupta, Thakur Deen Yadav, Usha Dutta, Neelam Varma, Manavjit Singh Sandhu, Rakesh Kochhar

**ORCID number:** Pankaj Gupta 0000-0003-3914-3757; Gaurav Chayan Das 0000-0003-1291-1082; Akash Bansal 0000-0003-1180-3098; Jayanta Samanta 0000-0002-9277-5086; Harshal S Mandavdhare 0000-0001-8020-9848; Vishal Sharma 0000-0003-2472-3409; Shano Naseem 0000-0003-0580-019X; Vikas Gupta 0000-0002-4105-3307; Thakur Deen Yadav 0000-0002-3546-8610; Usha Dutta 0000-0002-9435-3557; Neelam Varma 0000-0002-1170-5976; Manavjit Singh Sandhu 0000-0001-6365-6291; Rakesh Kochhar 0000-0002-4077-6474.

**Author contributions:** Gupta P acquired the data, designed the outline of the paper, performed the writing and did the major revisions; Das GC and Bansal A did the majority of the writing, and prepared the figures and tables; Samanta J, Mandavdhare HS, Sharma V, Naseem S, Gupta V, Yadav TD, Dutta U, Varma N, Sandhu MS and Kochhar R contributed to data acquisition as well as to writing; all authors have read and approve the final manuscript.

**Institutional review board**

**statement:** The study was reviewed and approved by the Postgraduate Institute of Medical Education and Research

**Pankaj Gupta, Gaurav Chayan Das, Akash Bansal, Manavjit Singh Sandhu,** Department of Radiodiagnosis, Postgraduate Institute of Medical Education and Research, Chandigarh 160012, India

**Jayanta Samanta, Harshal S Mandavdhare, Vishal Sharma, Usha Dutta, Rakesh Kochhar,** Department of Gastroenterology, Postgraduate Institute of Medical Education and Research, Chandigarh 160012, India

**Shano Naseem, Neelam Varma,** Department of Hematology, Postgraduate Institute of Medical Education and Research, Chandigarh 160012, India

**Vikas Gupta, Thakur Deen Yadav,** Department of Surgical Gastroenterology, Postgraduate Institute of Medical Education and Research, Chandigarh 160012, India

**Corresponding author:** Pankaj Gupta, MD, Associate Professor, Department of Radiodiagnosis, Postgraduate Institute of Medical Education and Research, Sector 12, Chandigarh 160012, India. [pankajgupta959@gmail.com](mailto:pankajgupta959@gmail.com)

**Abstract****BACKGROUND**

Early prediction of response to percutaneous catheter drainage (PCD) of necrotic collections in acute pancreatitis (AP) using simple and objective tests is critical as it may determine patient prognosis. The role of white blood cell (WBC) count and neutrophil-lymphocyte ratio (NLR) has not been assessed as a tool of early prediction of PCD success and is the focus of this study.

**AIM**

To assess the value of WBC and NLR in predicting response to PCD in AP.

**METHODS**

This retrospective study comprised consecutive patients with AP who underwent PCD between June 2018 and December 2019. Severity and fluid collections were classified according to the revised Atlanta classification and organ failure was defined according to the modified Marshall Score. WBC and NLR were monitored 24 h prior PCD (WBC-0/NLR-0) and 24 h (WBC-1/NLR-1), 48 h (WBC-2/NLR-2) and 72 h (WBC-3/NLR-3) after PCD. NLR was calculated by dividing the number

Institutional Review Board (approval No. INT/IEC/2020/SPL-468).

**Informed consent statement:** As this was a retrospective study, the need for informed written consent was waived.

**Conflict-of-interest statement:** There is no conflict of interest.

**Data sharing statement:** No additional data are available.

**Country/Territory of origin:** India

**Specialty type:** Medicine, research and experimental

**Provenance and peer review:** Invited article; Externally peer reviewed.

**Peer-review model:** Single blind

**Peer-review report's scientific quality classification**

Grade A (Excellent): 0  
Grade B (Very good): B  
Grade C (Good): 0  
Grade D (Fair): D  
Grade E (Poor): 0

**Open-Access:** This article is an open-access article that was selected by an in-house editor and fully peer-reviewed by external reviewers. It is distributed in accordance with the Creative Commons Attribution NonCommercial (CC BY-NC 4.0) license, which permits others to distribute, remix, adapt, build upon this work non-commercially, and license their derivative works on different terms, provided the original work is properly cited and the use is non-commercial. See: <http://creativecommons.org/licenses/by-nc/4.0/>

**Received:** May 13, 2021

**Peer-review started:** May 13, 2021

**First decision:** July 4, 2021

**Revised:** July 22, 2021

**Accepted:** November 26, 2021

**Article in press:** November 26, 2021

**Published online:** January 7, 2022

**P-Reviewer:** Gadour E, Hallac A

**S-Editor:** Gao CC

**L-Editor:** A

of neutrophils by the number of lymphocytes. The association of success of PCD (defined as survival without the need for surgery) with WBC and NLR was assessed. The trend of WBC and NLR was also assessed post PCD.

## RESULTS

One hundred fifty-five patients [median age  $40 \pm 13.6$  (SD), 64.5% males, 53.5% severe AP] were included in the final analysis. PCD was done for acute necrotic collection in 99 (63.8%) patients and walled-off necrosis in 56 (36.1%) patients. Median pain to PCD interval was  $24 \pm 69.89$  d. PCD was successful in 109 patients (group 1) and 46 patients (group 2) who failed to respond. There was no significant difference in the baseline characteristics between the two groups except the severity of AP and frequency of organ failure. Both WBC and NLR showed an overall decreasing trend. There was a significant difference between WBC-0 and WBC-1 ( $P = 0.0001$ ). WBC-1 and NLR-1 were significantly different between the two groups ( $P = 0.048$  and  $0.003$ , respectively). The area under the curve of WBC-1 and NLR-1 for predicting the success of PCD was 0.602 and 0.682, respectively. At a cut-off value of 9.87 for NLR-1, the sensitivity and specificity for predicting the success of PCD were calculated to be 75% and 65.4% respectively.

## CONCLUSION

WBC and NLR can be used as simple tests for predicting response to PCD in patients with acute necrotizing pancreatitis.

**Key Words:** Acute pancreatitis; Percutaneous catheter drainage; White blood cell; Neutrophil-lymphocyte ratio; Necrotic collection

©The Author(s) 2022. Published by Baishideng Publishing Group Inc. All rights reserved.

**Core Tip:** Predicting the success of percutaneous catheter drainage (PCD) is critical for a timely decision regarding further interventions. Neutrophilia and lymphopenia are surrogate markers of systemic inflammation and physiological stress. In this study, we evaluate the performance of white blood cell (WBC) and neutrophil-lymphocyte ratio (NLR) as predictors of response to PCD in patients with acute necrotizing pancreatitis. We found a falling trend in both WBC and NLR values, with WBC values showing a significant fall on day one after PCD compared to pre-procedure value.

**Citation:** Gupta P, Das GC, Bansal A, Samanta J, Mandavdhare HS, Sharma V, Naseem S, Gupta V, Yadav TD, Dutta U, Varma N, Sandhu MS, Kochhar R. Value of neutrophil-lymphocyte ratio in evaluating response to percutaneous catheter drainage in patients with acute pancreatitis. *World J Clin Cases* 2022; 10(1): 91-103

**URL:** <https://www.wjgnet.com/2307-8960/full/v10/i1/91.htm>

**DOI:** <https://dx.doi.org/10.12998/wjcc.v10.i1.91>

## INTRODUCTION

Acute pancreatitis (AP) is a common diagnosis in patients presenting with an acute abdomen[1]. In most patients, it is mild and recovers without any sequelae[1,2]. Necrotizing pancreatitis occurs in approximately 20%-30% of patients and is associated with significant morbidity and mortality[2]. Two-thirds of the patients with acute necrotizing pancreatitis (ANP) and sterile necrosis can be managed expectantly [3,4]. In the rest of the patients, pancreatic necrosis gets infected, usually during the third or fourth weeks of illness[3,4]. Infected pancreatic necrosis (IPN) has a mortality rate of up to 40%, particularly if associated with organ failure (OF)[5,6]. IPN needs drainage[7]. Mass effect on adjacent structures, increased intra-abdominal pressure and generalized "unwellness" for several weeks following ANP are other indications for drainage[7]. Minimally invasive techniques such as percutaneous catheter drainage (PCD), endoscopic transluminal drainage/necrosectomy, video-assisted retroperitoneal debridement (VARD), and minimally invasive surgical necrosectomy are preferred for drainage of the pancreatic collection as open surgical necrosectomy with

P-Editor: Gao CC



associated with significant morbidity and mortality[8-11].

Though endoscopic ultrasound (EUS) guided interventions have become popular, PCD remains relevant as EUS has limited utility for collections away from lesser sac or gastroduodenal region and in the setting of acute necrotic collection (ANC). PCD also acts as the first step for other procedures, including VARD or percutaneous endoscopic necrosectomy[7]. PCD is sufficient to manage collections in AP in almost 50% of cases[8,12]. Predicting response to PCD is critical to decide additional interventions [13]. Previous studies have identified computed tomography (CT) density of the collection, OF resolution, and volume reduction of the fluid collection after one week of PCD as significant predictors of successful PCD outcomes[13,14]. A few studies have reported the utility of inflammatory markers in predicting the response to PCD [15,16]. Evaluation of white blood cell (WBC) count and neutrophil-lymphocyte ratio (NLR) is simple, inexpensive, and universally available.

Although a few reports have evaluated the role of WBC and NLR in predicting the severity of AP, there are no published reports of the utilization of WBC and NLR to predict the success of PCD in ANP[17-20]. This study aimed to assess the role of WBC and NLR in predicting response to PCD in ANP.

## MATERIALS AND METHODS

### *Study design and population*

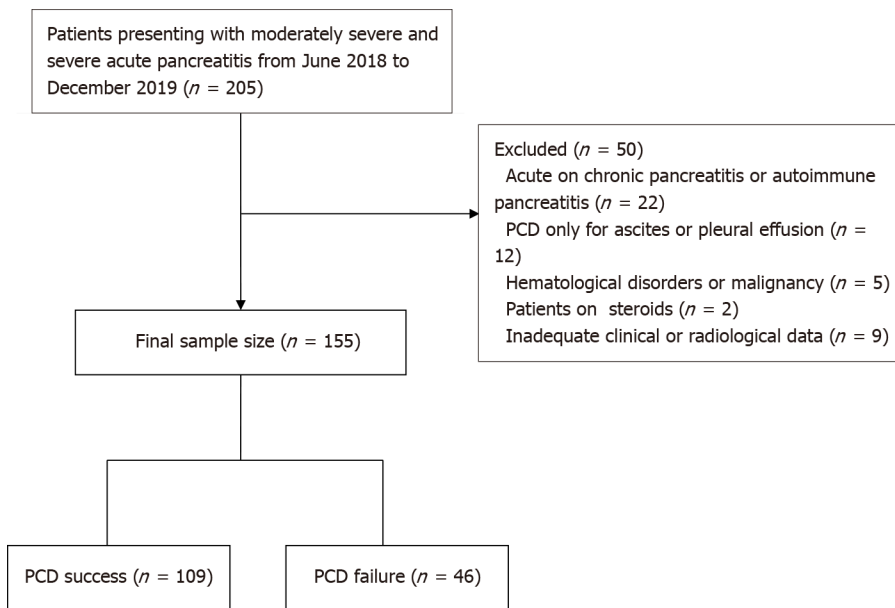
Our institutional ethics committee approved this retrospective observational study. Procedural informed written consent was obtained from all the patients. We retrospectively analyzed the data of consecutive patients with ANP undergoing PCD between June 2018 and December 2019. During the study period, 205 patients with moderately severe and severe AP were admitted. Patients who presented with acute on chronic or autoimmune pancreatitis ( $n = 22$ ), patients in whom PCD was done for ascites or pleural effusion ( $n = 12$ ), patients with hematological disorders or malignancy ( $n = 5$ ), patients on steroids ( $n = 2$ ), and who had inadequate baseline data ( $n = 9$ ), were excluded. The remaining 155 patients who underwent PCD of ANC or WON comprised the final study group. **Figure 1** shows the patient recruitment. The mean age was  $40 \pm 13.6$  years (range, 15-82 years). There were 100 (64.5%) males and 55 (35.5%) females.

### *Pre-PCD evaluation*

Co-morbidities were recorded. Severity classification of AP was done according to the revised Atlanta classification (RAC)[21]. Based on RAC, fluid collections developing  $\leq 4$  wk after pain onset are labeled as ANC, and those developing later are designated as walled-off necrosis (WON)[21]. A score of  $\geq 2$  in the modified Marshall scoring system for organ dysfunction was defined as the presence of OF. According to RAC, the presence of transient OF (OF  $< 48$  h) or local or systemic complications without persistent OF indicates moderately severe disease. Patients with persistent OF ( $> 48$  h, single or multiple) are classified as severe diseases. WBC and NLR values within 24 h before the first PCD (Baseline-WBC-0 and NLR-0) were recorded. WBC and differential leukocyte count were performed on an automated hematology analyzer (LH-780, Beckman coulter, United States). NLR was calculated by dividing the number of neutrophils by the number of lymphocytes. Besides, procalcitonin levels 24 h prior to the first PCD were recorded. The baseline contrast-enhanced CT (CECT) performed after 72 h of the onset of pain was reviewed for the size and collection site.

### *PCD protocol*

Suspected infection, persistent OF, and/or presence of pressure symptoms were the indications of PCD. An interventional radiologist with 3-10 years' experience in non-vascular abdominal interventions performed PCD under ultrasonography or CT guidance. Depending on the size, location, and extent of collection on CECT, the site of PCD was determined. Coagulation parameters were normalized (platelet count of at least 50000/mL and prothrombin index  $> 75\%$ ) if deranged before the procedure. PCD was done with a 10F to 16F catheter using the Seldinger technique. An 18 G puncture needle and 0.035-inch stiff guidewire were used for access to the collection. The tract was adequately dilated before placing a pigtail or a malecot catheter into the collection. Finally, the catheter was sutured with skin, and a drainage bag was connected. Aspirated fluid was sent for culture and microbial sensitivity testing. Daily flushing of the catheter was done using 50-100 mL normal saline to avoid catheter blockage. In persistent OF, ongoing sepsis, or systemic inflammatory response



**Figure 1** Flow chart shows patient recruitment. PCD: Percutaneous catheter drainage.

syndrome, catheter upgradations were done under ultrasound or fluoroscopic guidance. We used a 2-4F larger catheter than the already inserted catheter for upgradation. All patients underwent ultrasound after 48 h of PCD for assessment of the size of the collection. Patients who did not improve one week after PCD or even after upgradation underwent repeat CT. The decision for additional intervention was taken accordingly. In cases where the collection had entirely resolved or drain output had decreased to less than 10-20 mL/d for three consecutive days, the catheter was removed, provided the patient was afebrile with no signs of ongoing sepsis. For this study, only the first catheter insertion was considered for assessing success.

**Treatment protocol**

All patients were managed initially with fluid resuscitation, pain alleviation, oxygen support, organ system support, and nutritional support (enteral or parenteral) according to standard recommendations[22,23]. CECT of the abdomen was done between 5 and 7 d of onset of symptoms. As per the protocol in our center, opioids (tramadol, fentanyl) were used for pain relief. Antibiotics were given to patients with suspicion of infected necrosis (air foci on CECT or patient’s worsening clinical course) or extrapancreatic infections (*e.g.*, pneumonia, cholangitis), those having persistent fever beyond first week, or persistent multiple OF. Therefore, all patients were receiving antibiotics at the time of PCD. The culture of drain fluid was done to establish IPN. Pus culture and sensitivity directed choice of antibiotic regimens. The management of infected or symptomatic fluid collection was done using a step-up approach. Depending on the location of collections on CECT, percutaneous or endoscopic or a combined modality approach was chosen for drainage. If there was failure of clinical improvement after initial PCD, catheter upsizing was done. In patients having WON in the lesser sac or patients not improving with PCD alone, endoscopic necrosectomy was performed. Surgical necrosectomy was performed in patients who had necrotic collections at sites not amenable for endoscopic necrosectomy, or where endoscopic necrosectomy was not feasible or unsuccessful. The success of PCD was defined as survival (up to 6 wk after discharge from the hospital) without the need for surgery, and two groups (success *vs* failure) were made accordingly. The need for additional PCD or upsizing was not considered a failure of PCD.

**Post-PCD WBC and NLR**

Post-PCD WBC and NLR at 24 h (WBC-1/NLR-1), 48 h (WBC-2/NLR-2) and 72 h (WBC-3/NLR-3) were recorded.

**Outcomes**

Outcomes including the length of hospital stay, need for intensive care unit (ICU)

admission, length of ICU stay, need for surgery, and mortality was recorded.

### Statistical analysis

The data were analyzed using SPSS software version 23. The categorical variables were presented as proportions and percentages. The quantitative parameters were reported as the mean (with range) or median (with interquartile range), depending on the distribution. For categorical data, the Chi-square test or Fischer's exact test was used. The independent continuous variables were compared using the Student *t*-test or Mann-Whitney *U*-test, depending on the data's normality. Correlation between continuous variables was assessed using Pearson's correlation coefficient or Spearman's rank correlation coefficient, depending on the normality of the data. The differences in continuous variables in more than two paired groups were tested using the Wilcoxon signed rank test. Trends of WBC and NLR were evaluated over 72 h post-procedure and depicted using line diagrams, and differences in their trends were assessed. Receiver operating characteristic curves were assessed to predict the success of PCD based on WBC and NLR at different time points. The area under the curve (AUC) and cut-off values for a defined sensitivity and specificity were reported. A *P* value of less than 0.05 was considered to be statistically significant.

## RESULTS

### Baseline characteristics and patient outcome

The most common etiological factor was alcohol consumption ( $n = 79$ , 51%), followed by gallstone disease ( $n = 63$ , 40.6%), and endoscopic retrograde cholangiopancreatography (ERCP) ( $n = 6$ , 3.9%). Thirty-two (20.6%) patients had comorbidities [diabetes mellitus ( $n = 19$ ), hypertension ( $n = 21$ ), coronary artery disease ( $n = 8$ ), and chronic obstructive airway disease ( $n = 14$ )]. Thirteen patients had multiple co-morbidities. Eighteen (11.6%) patients were obese. According to RAC, seventy-two (46.5%) patients had moderately severe disease, and 83 (53.5%) patients had severe disease. Fifty-seven patients (36.7%) had infected necrosis (based on culture). Extrapneumonic infections were present in 15 (9.7%) patients. Blood cultures were positive in 10 (6.4%) patients. OF was present in 100 (64.5%) patients. Thirty-nine (25.2%) patients were on mechanical ventilation. ERCP was performed in 15 (9.7%) patients (excluding those with post-ERCP pancreatitis). The median procalcitonin level was 0.56 ng/mL (range, 0-100). PCD was done for ANC in 99 (63.8%) patients and WON in 56 (36.1%) patients. Median pain to PCD interval was 24 d. The initial catheter size ranged from 10-16F. The mean initial catheter size was  $12.6 \pm 1.9$ F. The mean number of catheters inserted per patient was 1.8 (range, 1-7). Multiple catheters were inserted in 41.9% of the patients ( $n = 65$ ). Catheter upsizing was performed in 86 (55.5%) patients. Twenty-four (15.4%) patients underwent surgery, and 7 (4.5%) patients underwent endoscopic drainage. The mean hospital stay was  $22 \pm 19.3$  d. ICU admission was recorded in 73 (47.1%) patients with a mean length of ICU stay of  $6.1 \pm 10.1$  d. Thirty-two (20.6%) patients died during the study period. PCD was successful in 109 patients (group 1), and 46 patients (group 2) failed to respond to PCD. The baseline demographic characteristics and outcomes are highlighted in [Table 1](#).

### Group statistics

There was no significant difference in the pain to PCD interval and procalcitonin levels between groups 1 and 2. The mean pain to PCD interval in group 1 was  $39.9 \pm 49.3$  d, and group 2 was  $54.06 \pm 76.8$  d ( $P = 0.249$ ). The mean procalcitonin level was  $3.2 \pm 11.2$  ng/mL in group 1 and  $5.4 \pm 15.3$  ng/mL in group 2 ( $P = 0.331$ ). According to the RAC, patients with severe AP were more likely to have PCD failure compared with the moderately severe AP ( $P < 0.001$ ). The size of the collection on baseline CECT was comparable between the two groups (11.5 cm in group 1 vs 11.5 cm in group 2,  $P = 0.974$ ). The most common site of the collection was a lesser sac (with variable extension to other sites) in both groups (64.2% in group 1 vs 52.2% in group 2,  $P = 0.464$ ). There was no significant association between PCD success and initial catheter size ( $P = 0.598$ ) or infected necrosis ( $P = 0.447$ ). OF was more frequent in group 2, but the difference was not statistically significant ( $P = 0.076$ ) ([Table 2](#)).

### WBC and NLR values

The median WBC before PCD and post PCD (day 1, 2, and 3) were as follows: WBC-0 =  $14900 \pm 7543.1$ , WBC-1 =  $12320 \pm 6743.4$ , WBC-2 =  $11650 \pm 6464.5$  and WBC-3 = 12400

**Table 1** Baseline demographic details and outcome parameters

Characteristic	Overall cohort
Age, yr (mean $\pm$ SD)	40 $\pm$ 13.6
Sex (%)	
Males	64.5
Females	35.5
Etiology, <i>n</i> (%)	
Alcohol	79 (51)
Gallstones	63 (40.6)
ERCP	6 (3.9)
Idiopathic	5 (3.2)
Hyperparathyroidism	2 (1.3)
Co-morbidities, <i>n</i> (%)	32
Diabetes mellitus	19 (59.4)
Hypertension	21 (65.6)
Coronary artery disease	8 (25)
Chronic obstructive airway disease	14 (43.7)
Obesity, <i>n</i> (%)	18 (11.6%)
Severity, <i>n</i> (%)	
Moderately severe	72 (46.4)
Severe	83 (53.5)
Pain to PCD interval, d (median)	24
Site of collection, <i>n</i> (%)	
Lesser sac	94 (62.6)
Paracolic gutter	28 (18.7)
Lesser sac and paracolic gutter	16 (10.7)
Perisplenic	4 (2.7)
Perihepatic	3 (2)
Pelvic	5 (3.3)
Infected necrosis, <i>n</i> (%)	75 (36.7)
Organ failure, <i>n</i> (%)	100 (64.5)
Length of hospital stay, d (mean $\pm$ SD)	22 $\pm$ 19.3
Length of ICU stay, d (mean $\pm$ SD)	6.1 $\pm$ 10.1
Surgery, <i>n</i> (%)	24 (15.4)
Endoscopic drainage, <i>n</i> (%)	7 (4.5)
Mortality, <i>n</i> (%)	32 (20.6)

ERCP: Endoscopic retrograde cholangiopancreatography; PCD: Percutaneous catheter drainage; ICU: Intensive care unit.

$\pm$  8825.6. There was a significant difference between WBC-0 and WBC-1 ( $P = 0.0001$ ) and WBC-1 and WBC-2 ( $P = 0.027$ ). However, there was no significant difference between WBC-2 and WBC-3. The median NLR-0, NLR-1, NLR-2, and NLR-3 were  $8.3 \pm 9.16$ ,  $7.2 \pm 10.3$ ,  $6.64 \pm 5.6$  and  $6.6 \pm 10.4$ , respectively. The serial NLRs were not significantly different from each other. The serial WBC and NLR are shown in [Table 3](#) and [Figure 2](#).

Table 2 Group statistics

Parameters		Overall cohort (n = 155)		
Characteristics	Compared variable	Group I	Group II	P value
	Number	109	46	
Pain to PCD interval	Mean	39.8	54.1	0.249
Site of collection (%)	Lesser sac	64.2	52.2	0.464
	Paracolic	16.5	21.7	
	Lesser sac + paracolic	11	8.7	
Procalcitonin	Mean	3.2	5.4	0.331
Collection size	Mean	11.4	11.5	0.974
Catheter size	< 12F	23	8	0.598
	> 12F	86	38	
RAC severity	Moderately severe	62	11	< 0.001
	Severe	47	35	
Infected necrosis	No	71	27	0.447
	Yes	38	19	
Organ failure	No	43	11	0.076
	Yes	66	34	

PCD: Percutaneous catheter drainage; RAC: Revised Atlanta classification.

Table 3 Serial white blood cell count and neutrophil-lymphocyte ratio

Day	n	Median	IQR (25%-75%)
<b>WBC</b>			
0	155	14.9	9.9-20.7
1	110	12.3	8.9-17.4
2	151	11.6	8.3-17.6
3	102	12.4	8.9-16.2
<b>NLR</b>			
0	140	8.2	5.2-14.1
1	88	7.2	4.4-12
2	136	6.4	4.1-11.9
3	89	6.6	3.8-12.1

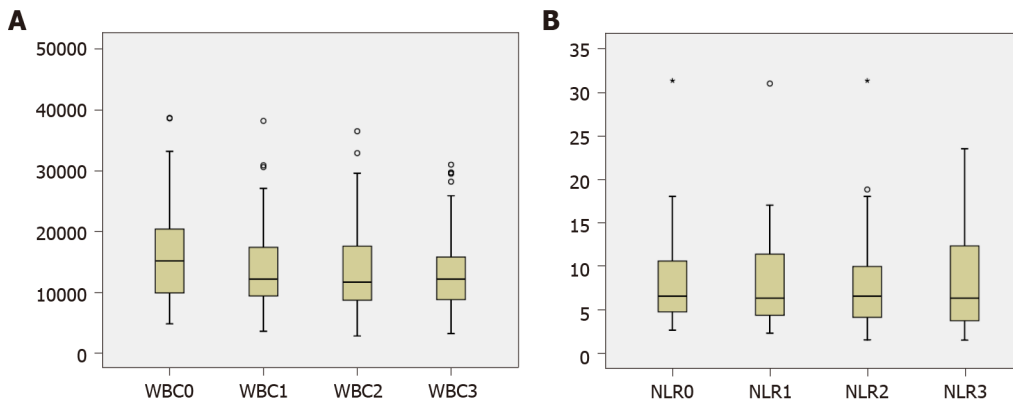
0: Prior to percutaneous catheter drainage (PCD); 1: 24 h following PCD; 2: 48 h following PCD; 3: 72 h following PCD; WBC: White blood cell count; NLR: Neutrophil-lymphocyte ratio.

### Trend of WBC and NLR

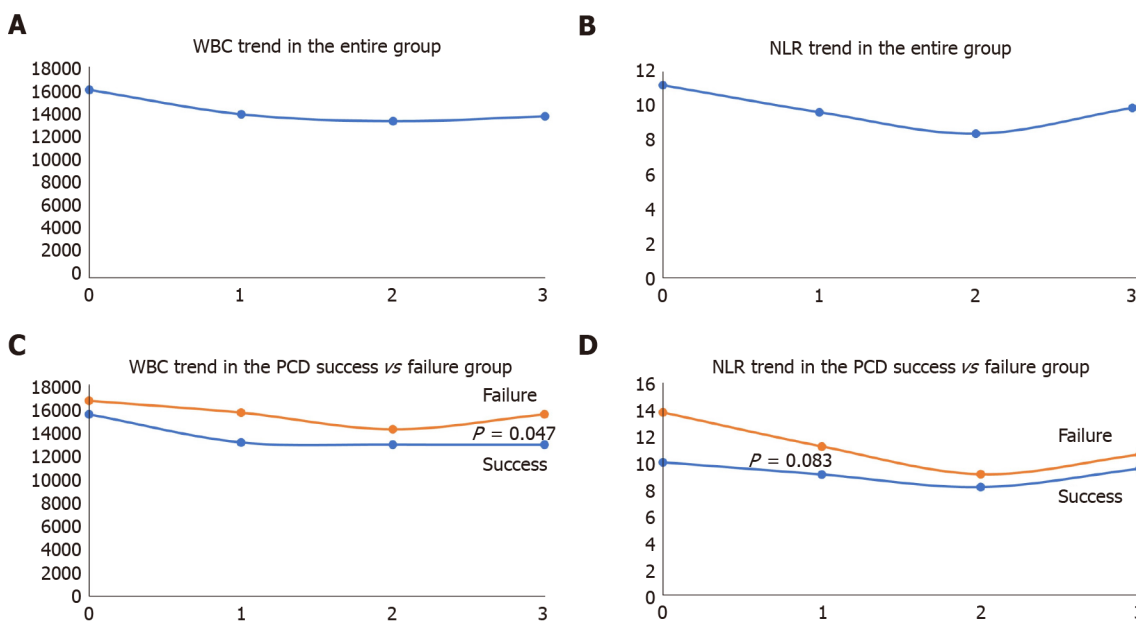
Both WBC and NLR showed an overall decreasing trend (Figure 3A and B). There was a significant difference in WBC trend between groups 1 and 2 ( $P = 0.047$ ) (Figure 3C). The difference was also seen in NLR's trend; however, it was not statistically significant ( $P = 0.083$ ) (Figure 3D). At 24 h post PCD, 71.6% of the patients had a fall in WBC while the rest had a rise in WBC. Similarly, 74.2% of the patients had a fall in NLR, and the rest had an increase in NLR at 24 h after PCD.

### Association of WBC and NLR with PCD success

No significant difference was seen in the baseline WBC and NLR between the two



**Figure 2** Box plots showing serial white blood cell count and neutrophil-lymphocyte ratio. A: White blood cell count; B: Neutrophil-lymphocyte ratio. WBC: White blood cell count; NLR: Neutrophil-lymphocyte ratio.



**Figure 3** Trend of white blood cell count and neutrophil-lymphocyte ratio. A and B: Trend of white blood cell count (WBC) and neutrophil-lymphocyte ratio (NLR) in the overall group; C and D: Comparison of trends of WBC and NLR in two groups. WBC: White blood cell count; NLR: Neutrophil-lymphocyte ratio; PCD: Percutaneous catheter drainage.

groups. WBC-1 and NLR-1 were significantly different between the two groups ( $P = 0.048$  and  $0.003$ , respectively). WBC-2, NLR-2, WBC-3, and NLR-3 did not show any significant difference between the two groups. The absolute change in the WBC and NLR (at all time points) was not significantly different between the groups.

**ROC analysis**

AUC for predicting the success of PCD for WBC-1 and NLR-1 was 0.602 and 0.682, respectively. Using a cut-off value of  $13.9 \times 10^3/\mu\text{L}$  for WBC-1, sensitivity and specificity were 64.5% and 55.6%, respectively. Similarly, using a cut-off value of 9.9 for NLR-1, sensitivity and specificity were calculated to be 75% and 65.4%, respectively. The AUCs of WBC and NLR at other time points are shown in **Figure 4** and **Table 4**.

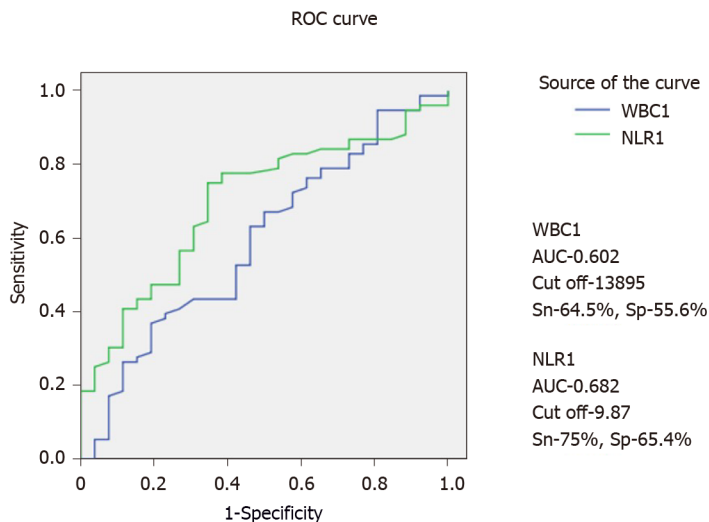
**DISCUSSION**

In this study, we evaluated the performance of WBC and NLR as predictors of response to PCD in patients with ANP. We found a significant fall in the WBC on day one following PCD in patients who responded to PCD compared with those who did

**Table 4** Area under the curve for serial white blood cell count and neutrophil-lymphocyte ratio for differentiating responders from non-responders to percutaneous catheter drainage

Time point	WBC	NLR
Baseline (0)	0.508	0.401
24 h (1)	0.602	0.682
48 h (2)	0.468	0.407
72 h (3)	0.416	0.427

WBC: White blood cell count; NLR: Neutrophil-lymphocyte ratio.



**Figure 4** Receiver operating characteristics curves for white blood cell and neutrophil-lymphocyte ratio at day 1 after percutaneous catheter drainage. WBC: White blood cell count; NLR: Neutrophil-lymphocyte ratio; AUC: Area under the curve.

not respond. NLR also showed a falling trend; however, the difference was not statistically significant. The WBC and NLR on day one post PCD were significantly lower in patients with a response to PCD than those who failed to respond to PCD. NLR performed better than WBC in predicting the success of PCD. On day one, the AUC for NLR was higher compared with the AUC for WBC on day one following PCD (0.682 *vs* 0.602). The day 1 NLR cut-off value of 9.9 had a sensitivity and specificity of 75% and 65.4%, respectively, for predicting response to PCD. For WBC-1, a cut-off value of  $13.9 \times 10^3/\mu\text{L}$  yielded a sensitivity and specificity of 64.5% and 55.6%, respectively.

Predicting the success of PCD is critical for a timely decision regarding further interventions. Previous studies have evaluated the role of serum inflammatory markers to predict the response to PCD[15,16]. In a study by Mallick *et al*[16] comprising 59 patients, serum levels of C-reactive protein (CRP), interleukin (IL)-6, and IL-10, before PCD and at 3 and 7 d following PCD were evaluated. There was a significant decrease in all three markers on day 3. Fall in IL-6 and CRP correlated with the outcomes of patients managed with PCD. Other investigators have explored the role of CT density of the collection, serial volume measurement of the collection, and resolution of OF to predict response to PCD[13,14]. WBC is a simple and inexpensive test routinely performed during the initial evaluation and follow-up of hospitalized patients with AP[24]. NLR is easily calculated from WBC. Neutrophilia and lymphopenia are surrogate markers of systemic inflammation and physiological stress [25,26]. The inflammatory cytokines generated during AP incite neutrophilia, causing increased NLR responsible for pancreatic tissue damage. Lymphocytes have been shown to decrease within 48 h of AP[20,24]. However, there are no studies evaluating the role of NLR in the prediction of response to PCD.

NLR has been shown to predict the prognosis of various benign and malignant diseases[27-31]. NLR has been shown to correlate with SOFA and APACHE-II scores in ICU patients[32,33]. A few studies have reported the prediction of the severity of AP using NLR[17-20]. It has been demonstrated that NLR is superior to WBC in predicting

clinical outcomes in critically ill patients[28-31]. NLR's superiority over WBC is due to several factors, including alteration of WBC by various physiological and pathological states, including stress, pregnancy, and hydration status, and technical aspects, including withdrawal and handling of blood samples. The WBC/individual subtypes are prone to be affected by these factors while NLR remains stable. More importantly, NLR represents the contribution of two divergent immune pathways. The neutrophilic response to inflammatory mediators, *e.g.*, myeloperoxidase, elastase, IL-1, and IL-6, leads to non-specific inflammation and tissue destruction. Lymphocyte immune response occurs later than the neutrophilic response and aims to control non-specific inflammation[34]. Persistent lymphopenia is associated with poor prognosis in critically ill patients[35,36]. Besides, there may be lymphocyte dysfunction. The association between reduced lymphocyte count and severity of pancreatitis has been reported previously[37]. NLR is dynamic, and the optimal cut-off varies with time.

We also found that NLR was superior to WBC in predicting response to PCD. WBC and NLR on day 1 were found to be significantly associated with PCD success. This can be explained by a fall in neutrophils and an increase in lymphocytes over the 1<sup>st</sup> 24 h following PCD, secondary to reducing inflammatory load. Previous studies have shown that the maximum reduction in the volume of the collection is achieved in the 1<sup>st</sup> 24 h[13,14]. Mallick *et al*[16] showed that a major decline in the levels of IL-6 and IL-10 occurred within 72 h.

A few other predictors of PCD outcome have been reported in the literature. Reduction in the size of the collection, decline in the inflammatory markers, and resolution of OF after PCD have been shown to predict success[13,16,38,39]. Higher CT density of collection, indicating solid debris, has been shown to be associated with poorer PCD outcomes[38,39]. Some of these factors might influence the NLR, however, the association between these factors and NLR remains to be investigated. Future studies tailored to investigate the interplay between NLR and the other predictive factors may further strengthen the rationale of the utilization of NLR as a simple robust test for PCD outcomes.

There were a few limitations to our study. As the data was analyzed retrospective, it is prone to several biases. We analyzed the WBC and NLR for the first PCD. However, patients with ANP frequently undergo multiple drainage procedures. We did not take the effect of the subsequent endoscopic or percutaneous interventions into account. We did not compare the performance of WBC and NLR with other inflammatory markers. Though we evaluated the baseline procalcitonin, the later values were not analyzed. The WBC and NLR values were missing for few patients on follow-up. The influence of co-morbidities and superadded infections on WBC and NLR could not be fully investigated.

---

## CONCLUSION

---

WBC and NLR can be used as simple tests in helping to predict response to PCD in patients with ANP. The performance of NLR is superior to WBC.

## ARTICLE HIGHLIGHTS

### **Research background**

Acute pancreatitis (AP) is a common diagnosis in patients presenting with an acute abdomen. Necrotizing pancreatitis occurs in approximately 20%-30% of patients and is associated with significant morbidity and mortality. Necrotic pancreatic collections are one of the most important complications that may need treatment. Minimally invasive techniques including percutaneous catheter drainage (PCD), endoscopic drainage, and minimally invasive surgery are now preferred to open necrosectomy. It is important to predict response to minimally invasive techniques to decide further interventions. The aim of this study was to predict the role of white blood cell count (WBC) and neutrophil to lymphocyte ratio (NLR) in predicting response to PCD.

### **Research motivation**

Previous studies have identified computed tomography density of the collection, organ failure resolution, and volume reduction of the fluid collection after one week of PCD as significant predictors of successful PCD outcomes. A few studies have reported the utility of inflammatory markers in predicting the response to PCD,

however, data on WBC and NLR is lacking in this regard. Evaluation of WBC count and NLR is simple, inexpensive, and universally available and we evaluated their role in PCD response prediction.

### Research objectives

This was a retrospective study to evaluate the role of WBC and NLR in predicting response to PCD and clinical outcomes in terms of hospital and intensive care unit stay, need for surgery.

### Research methods

We retrospectively analyzed WBC and NLR values 24 h before PCD and successive values at 24, 48, and 72 h after the procedure. The success of PCD was defined as survival (up to 6 wk after discharge from the hospital) without the need for surgery, and patients were divided into two groups (success *vs* failure) accordingly. The association of the success of PCD with WBC and NLR was assessed. The trend of WBC and NLR was also assessed post PCD.

### Research results

One hundred fifty-five patients [median age 40 ± 13.6 (SD), 64.5% males, 53.5% severe AP] were included in the final analysis. PCD was done for acute necrotic collection in 99 (63.8%) patients and walled off necrosis in 56 (36.1%) patients. PCD was successful in 109 patients (group 1) and 46 patients (group 2) failed to respond. There was no significant difference in the baseline characteristics between the two groups except severity of AP and frequency of organ failure. Both WBC and NLR showed an overall decreasing trend. There was a significant difference between WBC-0 and WBC-1 ( $P = 0.0001$ ). WBC-1 and NLR-1 were significantly different between the two groups ( $P = 0.048$  and  $0.003$ , respectively). The area under the curve of WBC-1 and NLR-1 for predicting the success of PCD was 0.602 and 0.682, respectively. At a cut-off value of 9.87 for NLR-1, the sensitivity and specificity for predicting the success of PCD were calculated to be 75% and 65.4% respectively.

### Research conclusions

Our study has shown that WBC and NLR values and their trends can be used to predict success of PCD in a timely manner.

### Research perspectives

WBC and NLR is a simple, safe, and inexpensive tool for predicting response to PCD and can be used to decide the need for further interventions and thus improve patient outcomes.

---

## REFERENCES

- 1 **Wu BU**, Johannes RS, Sun X, Tabak Y, Conwell DL, Banks PA. The early prediction of mortality in acute pancreatitis: a large population-based study. *Gut* 2008; **57**: 1698-1703 [PMID: 18519429 DOI: 10.1136/gut.2008.152702]
- 2 **Beger HG**, Rau BM. Severe acute pancreatitis: Clinical course and management. *World J Gastroenterol* 2007; **13**: 5043-5051 [PMID: 17876868 DOI: 10.3748/wjg.v13.i38.5043]
- 3 **van Grinsven J**, van Santvoort HC, Boermeester MA, Dejong CH, van Eijck CH, Fockens P, Besselink MG; Dutch Pancreatitis Study Group. Timing of catheter drainage in infected necrotizing pancreatitis. *Nat Rev Gastroenterol Hepatol* 2016; **13**: 306-312 [PMID: 26956064 DOI: 10.1038/nrgastro.2016.23]
- 4 **Besselink MG**, van Santvoort HC, Boermeester MA, Nieuwenhuijs VB, van Goor H, Dejong CH, Schaapherder AF, Gooszen HG; Dutch Acute Pancreatitis Study Group. Timing and impact of infections in acute pancreatitis. *Br J Surg* 2009; **96**: 267-273 [PMID: 19125434 DOI: 10.1002/bjs.6447]
- 5 **van Santvoort HC**, Bakker OJ, Bollen TL, Besselink MG, Ahmed Ali U, Schrijver AM, Boermeester MA, van Goor H, Dejong CH, van Eijck CH, van Ramshorst B, Schaapherder AF, van der Harst E, Hofker S, Nieuwenhuijs VB, Brink MA, Kruijff PM, Manusama ER, van der Schelling GP, Karsten T, Hesselink EJ, van Laarhoven CJ, Rosman C, Bosscha K, de Wit RJ, Houdijk AP, Cuesta MA, Wahab PJ, Gooszen HG; Dutch Pancreatitis Study Group. A conservative and minimally invasive approach to necrotizing pancreatitis improves outcome. *Gastroenterology* 2011; **141**: 1254-1263 [PMID: 21741922 DOI: 10.1053/j.gastro.2011.06.073]
- 6 **Petrov MS**, Shanbhag S, Chakraborty M, Phillips AR, Windsor JA. Organ failure and infection of pancreatic necrosis as determinants of mortality in patients with acute pancreatitis. *Gastroenterology* 2010; **139**: 813-820 [PMID: 20540942 DOI: 10.1053/j.gastro.2010.06.010]

- 7 **Trikudanathan G**, Wolbrink DRJ, van Santvoort HC, Mallery S, Freeman M, Besselink MG. Current Concepts in Severe Acute and Necrotizing Pancreatitis: An Evidence-Based Approach. *Gastroenterology* 2019; **156**: 1994-2007.e3 [PMID: 30776347 DOI: 10.1053/j.gastro.2019.01.269]
- 8 **Hartwig W**, Maksan SM, Foitzik T, Schmidt J, Herfarth C, Klar E. Reduction in mortality with delayed surgical therapy of severe pancreatitis. *J Gastrointest Surg* 2002; **6**: 481-487 [PMID: 12023003 DOI: 10.1016/s1091-255x(02)00008-2]
- 9 **van Baal MC**, van Santvoort HC, Bollen TL, Bakker OJ, Besselink MG, Gooszen HG; Dutch Pancreatitis Study Group. Systematic review of percutaneous catheter drainage as primary treatment for necrotizing pancreatitis. *Br J Surg* 2011; **98**: 18-27 [PMID: 21136562 DOI: 10.1002/bjs.7304]
- 10 **Sharma V**, Rana SS, Bhasin DK. Endoscopic ultrasound guided interventional procedures. *World J Gastrointest Endosc* 2015; **7**: 628-642 [PMID: 26078831 DOI: 10.4253/wjge.v7.i6.628]
- 11 **van Santvoort HC**, Besselink MG, Horvath KD, Sinanan MN, Bollen TL, van Ramshorst B, Gooszen HG; Dutch Acute Pancreatitis Study Group. Videoscopic assisted retroperitoneal debridement in infected necrotizing pancreatitis. *HPB (Oxford)* 2007; **9**: 156-159 [PMID: 18333133 DOI: 10.1080/13651820701225688]
- 12 **van Santvoort HC**, Besselink MG, Bakker OJ, Hofker HS, Boermeester MA, Dejong CH, van Goor H, Schaapherder AF, van Eijck CH, Bollen TL, van Ramshorst B, Nieuwenhuijs VB, Timmer R, Laméris JS, Kruyt PM, Manusama ER, van der Harst E, van der Schelling GP, Karsten T, Hesselink EJ, van Laarhoven CJ, Rosman C, Bosscha K, de Wit RJ, Houdijk AP, van Leeuwen MS, Buskens E, Gooszen HG; Dutch Pancreatitis Study Group. A step-up approach or open necrosectomy for necrotizing pancreatitis. *N Engl J Med* 2010; **362**: 1491-1502 [PMID: 20410514 DOI: 10.1056/NEJMoa0908821]
- 13 **Bellam BL**, Samanta J, Gupta P, Kumar M P, Sharma V, Dhaka N, Sarma P, Muktesh G, Gupta V, Sinha SK, Kochhar R. Predictors of outcome of percutaneous catheter drainage in patients with acute pancreatitis having acute fluid collection and development of a predictive model. *Pancreatology* 2019; **19**: 658-664 [PMID: 31204261 DOI: 10.1016/j.pan.2019.05.467]
- 14 **Guo Q**, Li A, Hu W. Predictive factors for successful ultrasound-guided percutaneous drainage in necrotizing pancreatitis. *Surg Endosc* 2016; **30**: 2929-2934 [PMID: 26487212 DOI: 10.1007/s00464-015-4579-x]
- 15 **Kotán R**, Sápy P, Sipka S, Damjanovich L, Kovács DÁ, Csiszko A, Balog K, Szentkereszty Z. Serum C-reactive protein and white blood cell level as markers of successful percutaneous drainage of acute sterile peripancreatic fluid collection. *Chirurgia (Bucur)* 2015; **110**: 56-59 [PMID: 25800317 DOI: 10.15534/ZPTP/2015/3-4/8]
- 16 **Mallick B**, Tomer S, Arora SK, Lal A, Dhaka N, Samanta J, Sinha SK, Gupta V, Yadav TD, Kochhar R. Change in serum levels of inflammatory markers reflects response of percutaneous catheter drainage in symptomatic fluid collections in patients with acute pancreatitis. *JGH Open* 2019; **3**: 295-301 [PMID: 31406922 DOI: 10.1002/jgh3.12158]
- 17 **Azab B**, Jaglall N, Atallah JP, Lamet A, Raja-Surya V, Farah B, Lesser M, Widmann WD. Neutrophil-lymphocyte ratio as a predictor of adverse outcomes of acute pancreatitis. *Pancreatology* 2011; **11**: 445-452 [PMID: 21968329 DOI: 10.1159/00031494]
- 18 **Suppiah A**, Malde D, Arab T, Hamed M, Allgar V, Smith AM, Morris-Stiff G. The prognostic value of the neutrophil-lymphocyte ratio (NLR) in acute pancreatitis: identification of an optimal NLR. *J Gastrointest Surg* 2013; **17**: 675-681 [PMID: 23371356 DOI: 10.1007/s11605-012-2121-1]
- 19 **Jeon TJ**, Park JY. Clinical significance of the neutrophil-lymphocyte ratio as an early predictive marker for adverse outcomes in patients with acute pancreatitis. *World J Gastroenterol* 2017; **23**: 3883-3889 [PMID: 28638228 DOI: 10.3748/wjg.v23.i21.3883]
- 20 **Kong W**, He Y, Bao H, Zhang W, Wang X. Diagnostic Value of Neutrophil-Lymphocyte Ratio for Predicting the Severity of Acute Pancreatitis: A Meta-Analysis. *Dis Markers* 2020; **2020**: 9731854 [PMID: 32454909 DOI: 10.1155/2020/9731854]
- 21 **Banks PA**, Bollen TL, Dervenis C, Gooszen HG, Johnson CD, Sarr MG, Tsiotos GG, Vege SS; Acute Pancreatitis Classification Working Group. Classification of acute pancreatitis--2012: revision of the Atlanta classification and definitions by international consensus. *Gut* 2013; **62**: 102-111 [PMID: 23100216 DOI: 10.1136/gutjnl-2012-302779]
- 22 **Hasibeder WR**, Torgersen C, Rieger M, Dünser M. Critical care of the patient with acute pancreatitis. *Anaesth Intensive Care* 2009; **37**: 190-206 [PMID: 19400483 DOI: 10.1177/0310057X0903700206]
- 23 **Dellinger RP**, Levy MM, Rhodes A, Annane D, Gerlach H, Opal SM, Sevransky JE, Sprung CL, Douglas IS, Jaeschke R, Osborn TM, Nunnally ME, Townsend SR, Reinhart K, Kleinpell RM, Angus DC, Deutschman CS, Machado FR, Rubenfeld GD, Webb SA, Beale RJ, Vincent JL, Moreno R; Surviving Sepsis Campaign Guidelines Committee including the Pediatric Subgroup. Surviving sepsis campaign: international guidelines for management of severe sepsis and septic shock: 2012. *Crit Care Med* 2013; **41**: 580-637 [PMID: 23353941 DOI: 10.1097/CCM.0b013e31827e83af]
- 24 **Pezzilli R**, Billi P, Beltrandi E, Casadei Maldini M, Mancini R. Impaired lymphocyte proliferation in human acute pancreatitis. *Digestion* 1997; **58**: 431-436 [PMID: 9383633 DOI: 10.1159/000201479]
- 25 **Gomez D**, Farid S, Malik HZ, Young AL, Toogood GJ, Lodge JP, Prasad KR. Preoperative neutrophil-to-lymphocyte ratio as a prognostic predictor after curative resection for hepatocellular carcinoma. *World J Surg* 2008; **32**: 1757-1762 [PMID: 18340479 DOI: 10.1007/s00268-008-9552-6]
- 26 **Sharaiha RZ**, Halazun KJ, Mirza F, Port JL, Lee PC, Neugut AI, Altorki NK, Abrams JA. Elevated preoperative neutrophil:lymphocyte ratio as a predictor of postoperative disease recurrence in

- esophageal cancer. *Ann Surg Oncol* 2011; **18**: 3362-3369 [PMID: [21547702](#) DOI: [10.1245/s10434-011-1754-8](#)]
- 27 **Gibson PH**, Croal BL, Cuthbertson BH, Small GR, Ifezulike AI, Gibson G, Jeffrey RR, Buchan KG, El-Shafei H, Hillis GS. Preoperative neutrophil-lymphocyte ratio and outcome from coronary artery bypass grafting. *Am Heart J* 2007; **154**: 995-1002 [PMID: [17967611](#) DOI: [10.1016/j.ahj.2007.06.043](#)]
- 28 **Duffy BK**, Gurm HS, Rajagopal V, Gupta R, Ellis SG, Bhatt DL. Usefulness of an elevated neutrophil to lymphocyte ratio in predicting long-term mortality after percutaneous coronary intervention. *Am J Cardiol* 2006; **97**: 993-996 [PMID: [16563903](#) DOI: [10.1016/j.amjcard.2005.10.034](#)]
- 29 **Walsh SR**, Cook EJ, Goulder F, Justin TA, Keeling NJ. Neutrophil-lymphocyte ratio as a prognostic factor in colorectal cancer. *J Surg Oncol* 2005; **91**: 181-184 [PMID: [16118772](#) DOI: [10.1002/jso.20329](#)]
- 30 **Pantzaris ND**, Platanaki C, Pierrako C, Karamouzos V, Velissaris D. Neutrophil-to-lymphocyte Ratio Relation to Sepsis Severity Scores and Inflammatory Biomarkers in Patients with Community-acquired Pneumonia: A Case Series. *J Transl Int Med* 2018; **6**: 43-46 [PMID: [29607304](#) DOI: [10.2478/jtim-2018-0009](#)]
- 31 **Velissaris D**, Pantzaris ND, Bountouris P, Gogos C. Correlation between neutrophil-to-lymphocyte ratio and severity scores in septic patients upon hospital admission. A series of 50 patients. *Rom J Intern Med* 2018; **56**: 153-157 [PMID: [29427556](#) DOI: [10.2478/rjim-2018-0005](#)]
- 32 **Chaplin DD**. Overview of the immune response. *J Allergy Clin Immunol* 2010; **125**: S3-23 [PMID: [20176265](#) DOI: [10.1016/j.jaci.2009.12.980](#)]
- 33 **de Jager CP**, van Wijk PT, Mathoera RB, de Jongh-Leuvenink J, van der Poll T, Wever PC. Lymphocytopenia and neutrophil-lymphocyte count ratio predict bacteremia better than conventional infection markers in an emergency care unit. *Crit Care* 2010; **14**: R192 [PMID: [21034463](#) DOI: [10.1186/cc9309](#)]
- 34 **Zahorec R**. Ratio of neutrophil to lymphocyte counts--rapid and simple parameter of systemic inflammation and stress in critically ill. *Bratisl Lek Listy* 2001; **102**: 5-14 [PMID: [11723675](#)]
- 35 **Takeyama Y**, Takas K, Ueda T, Hori Y, Goshima M, Kuroda Y. Peripheral lymphocyte reduction in severe acute pancreatitis is caused by apoptotic cell death. *J Gastrointest Surg* 2000; **4**: 379-387 [PMID: [11058856](#) DOI: [10.1016/s1091-255x\(00\)80016-5](#)]
- 36 **Pezzilli R**, Billi P, Beltrandi E, Maldini M, Mancini R, Morselli Labate AM, Miglioli M. Circulating lymphocyte subsets in human acute pancreatitis. *Pancreas* 1995; **11**: 95-100 [PMID: [7667248](#) DOI: [10.1097/00006676-199507000-00010](#)]
- 37 **Liu WH**, Wang T, Yan HT, Chen T, Xu C, Ye P, Zhang N, Liu ZC, Tang LJ. Predictors of percutaneous catheter drainage (PCD) after abdominal paracentesis drainage (APD) in patients with moderately severe or severe acute pancreatitis along with fluid collections. *PLoS One* 2015; **10**: e0115348 [PMID: [25659143](#) DOI: [10.1371/journal.pone.0115348](#)]
- 38 **Cao X**, Cao F, Li A, Gao X, Wang XH, Liu DG, Fang Y, Guo DH, Li F. Predictive factors of pancreatic necrosectomy following percutaneous catheter drainage as a primary treatment of patients with infected necrotizing pancreatitis. *Exp Ther Med* 2017; **14**: 4397-4404 [PMID: [29104650](#) DOI: [10.3892/etm.2017.5107](#)]
- 39 **Ke L**, Li J, Hu P, Wang L, Chen H, Zhu Y. Percutaneous Catheter Drainage in Infected Pancreatitis Necrosis: a Systematic Review. *Indian J Surg* 2016; **78**: 221-228 [PMID: [27358518](#) DOI: [10.1007/s12262-016-1495-9](#)]



Published by **Baishideng Publishing Group Inc**  
7041 Koll Center Parkway, Suite 160, Pleasanton, CA 94566, USA  
**Telephone:** +1-925-3991568  
**E-mail:** [bpgoffice@wjgnet.com](mailto:bpgoffice@wjgnet.com)  
**Help Desk:** <https://www.f6publishing.com/helpdesk>  
<https://www.wjgnet.com>

