

Title:
**ENDOSCOPIC MANAGEMENT OF LOCAL COMPLICATIONS
OF CHRONIC PANCREATITIS.**

Authors:
Juan J. Vila, Federico Bolado Concejo

DOI: 10.17235/reed.2020.7372/2020

Link: [PubMed \(Epub ahead of print\)](#)

Please cite this article as:
Vila Juan J., Bolado Concejo Federico. ENDOSCOPIC
MANAGEMENT OF LOCAL COMPLICATIONS OF CHRONIC
PANCREATITIS.. Rev Esp Enferm Dig 2020. doi:
10.17235/reed.2020.7372/2020.



This is a PDF file of an unedited manuscript that has been accepted for publication. As a service to our customers we are providing this early version of the manuscript. The manuscript will undergo copyediting, typesetting, and review of the resulting proof before it is published in its final form. Please note that during the production process errors may be discovered which could affect the content, and all legal disclaimers that apply to the journal pertain.

REV 7372

ENDOSCOPIC MANAGEMENT OF LOCAL COMPLICATIONS OF CHRONIC PANCREATITIS.

Juan J. Vila¹, Federico Bolado².

1. Endoscopy Unit. Gastroenterology Dpt. Complejo Hospitalario de Navarra. Pamplona. Spain.

2. Pancreatic and Biliary Diseases Unit. Gastroenterology Dpt. Complejo Hospitalario de Navarra. Pamplona. Spain.

Correspondence: Juan J. Vila

Gastroenterology Dpt. Complejo Hospitalario de Navarra.

c/ Irunlarrea, 3. 31.008. Pamplona

e-mail: juanjvila@gmail.com

SUMMARY

Endoscopic treatment of local complications in patients with chronic pancreatitis has gained ground over the surgical alternative in the last years. The less aggressiveness of endoscopic treatment, as well as the possibility to apply it repeatedly in high-risk patients, has favored this development. In addition, the incorporation of new highly accurate endoscopic therapeutic options such as pancreatoscopy-guided lithotripsy and endoscopic ultrasound-guided treatments, make endoscopic treatment the first choice in many cases, despite discordant data in the literature. This article reviews the endoscopic treatment of the most common local complications of chronic pancreatitis, such as pancreatolithiasis, pseudocysts, and pancreatic, biliary, and duodenal ductal stenosis.

Keywords

Chronic pancreatitis, Endoscopic Retrograde Cholangiopancreatography, Endoscopic Ultrasound, Pancreatoscopy, Lithotripsy, Pancreatic Stent.

Acronyms

ERCP: Endoscopic Retrograde Cholangiopancreatography; LL: laser lithotripsy; EHL: electrohydraulic lithotripsy; ESWL: extracorporeal shock wave lithotripsy; MPS: multiple plastic stents; cSEMS: fully covered self-expandable metallic stent.

INTRODUCTION

Chronic pancreatitis is characterized by recurrent episodes of inflammation causing the replacement of the pancreatic parenchyma by fibrous tissue, which sometimes leads to pancreatic endocrine and exocrine insufficiency¹.

The main clinical manifestation of chronic pancreatitis is abdominal pain. This is partly related to hyperpressure in the pancreatic duct, which can be secondary to different local complications. Although decompressive surgical treatment provides more long-lasting pain relief, from a practical point of view, surgery is usually indicated only when endoscopic treatment has already been tried and has failed, and not as first-line treatment^{2,3}.

Endoscopic treatment is considered when the patient with chronic pancreatitis has pain or other symptoms associated with the following local complications: pancreatic ductal stones, pancreatic ductal stenosis, pancreatic pseudocyst, biliary stricture, and duodenal stenosis. It is not indicated in patients with asymptomatic or uncomplicated chronic pancreatitis¹. The goals of the endoscopic treatment are to ensure pancreatic drainage, to relieve and reduce the frequency of pain episodes, and to resolve local complications.

Two procedures are available for endoscopic treatment of local complications of chronic pancreatitis: endoscopic retrograde cholangiopancreatography (ERCP) and therapeutic endoscopic ultrasound (EUS).

In this article we will update the endoscopic management of the aforementioned local complications with these two endoscopic procedures, reviewing the current literature and making recommendations in this regard.

PANCREATIC DUCTAL LITHIASIS

The prevalence of pancreatic ductal lithiasis in chronic pancreatitis varies between 50-90 %. It is higher in men with high alcohol and tobacco consumption. Most of these stones are calcified, located in the head of the pancreas and have a mean diameter of 10 mm. They are associated with pancreatic ductal stenosis in approximately 50 % of cases, which hinders the endoscopic treatment⁴.

The first-line treatment for pancreatic ductal lithiasis >5 mm is extracorporeal shock wave lithotripsy (ESWL)^{4,5}, although its use with this indication in our country is not very widespread for various reasons. From an endoscopic point of view, we have three treatment options: classical or standard treatment, pancreatoscopy-guided lithotripsy, and minor papilla drainage.

Standard endoscopic treatment consists in performing a pancreatic sphincterotomy, associated or not with balloon sphincteroplasty, followed by cleaning of the pancreatic duct with Fogarty balloon or Dormia basket. It is the most widely used treatment, although its results are modest. Complete cleaning of the pancreatic duct is achieved in <50 %. Despite this, it is considered the treatment of choice for stones ≤5 mm located in the head of the pancreas⁴. These stones are frequently associated with pancreatic duct strictures. In such cases a prior stricture dilation is often required, which improves the endoscopic treatment outcomes.

The results of endoscopic treatment are worse with stones >10 mm, multiple ductal stones along the pancreatic duct, impacted stones and stones lodged above a stricture. The second therapeutic option is pancreatoscopy with laser (LL) or electrohydraulic lithotripsy (EHL). Both techniques have experienced an important progress thanks to the popularization of single operator cholangioscopy and pancreatoscopy systems. Overall, the technical success rate exceeds 80 % with a variable rate of adverse events ranging from 0 % to 28 % (Table 1). The largest study is a retrospective research that compares ERCP treatment with standard technique versus pancreatoscopy and intraductal lithotripsy⁶. It includes 94 patients in the lithotripsy group and 129 in the standard therapy group. Technical success was significantly higher in the first (98.9 % vs 87.6 %). The overall stone recurrence rate was 36 % after a median follow-up of 180 days (range: 27-1865), without significant differences between both groups. Lithotripsy was used more frequently to treat lithiasis that were larger, more

numerous, impacted and located in the body and tail of the pancreas. In other words, it was used to treat more difficult cases. Clinical success was similar in both groups (82.9 % vs 84.5 %) and there were no differences in the need for subsequent surgery, mean emergency room visits, mean hospitalizations or incidence of adverse effects, which was 6.3 % and 8.1 % respectively.

Therefore, ERCP and lithotripsy treatment allows the resolution of symptomatic lithiasis in a high percentage of patients, especially when the standard technique has fewer options for success. In addition, it does not carry a greater risk of complications.

A non-dilated pancreatic duct may limit the use of pancreatoscopy and lithotripsy, since at least 3-4 mm are required for the introduction of the pancreatoscope. This may occur in patients with a normal duct diameter in the head and a proximal stricture with retrograde chronic pancreatitis, although this situation is rare (Figure 1).

The third option for endoscopic treatment is the placement of a stent through the minor papilla. The goal of this therapy is to decompress the dorsal pancreatic duct, but it can be effective when the stone is located in the ventral duct. In a series of 16 cases, a clinical success rate of 75 % was obtained with an incidence of adverse events of 6.3 %⁷. It is a rescue technique that can be used as a bridge to surgical or ESWL treatment, or as a definitive treatment in poor candidates for any of the alternatives. In our center we have had the opportunity to perform this treatment to several patients, with good results.

Following the recommendations of other authors⁶, in our center the first-choice treatment for pancreatic ductal lithiasis is endoscopic. Initially, the stones resolution is attempted with the standard technique, and in the case of failure, LL or EHL at the discretion of the endoscopist are used (Figure 2), although a tendency to obtain better results with LL has been described⁸. If endoscopic therapy is not feasible or fails, we propose ESWL or surgery.

DUCTAL PANCREATIC STENOSIS

A dominant pancreatic ductal stenosis is defined as a stricture that conditions an upstream ductal dilation >6 mm in diameter or that prevents the outflow of the contrast injected with a 6F catheter inserted through the narrowed segment¹⁴. The

recommended treatment is the placement of a 10F plastic stent as short as possible, by conventional ERCP. It should be maintained for at least one year. Some authors recommend stent replacement on demand, but the preferred strategy is to make at least one exchange at 6 months^{1,4}. In our hospital we follow this policy, making an exchange at 6 months or earlier in patients with pain recurrence. The stent should be straight or single-pigtail, although less proximal migration has been described with the latter⁵.

Performing this treatment, the resolution of the stenosis is achieved in 9-50 % of cases, although long-term clinical success reaches 32-94 % (Table 2).

Persistent symptomatic strictures after one year of treatment with a 10F plastic stent are considered refractory strictures^{1,4}. In such case, endoscopic treatment with multiple simultaneous plastic stents (MPS), or with a fully covered self-expandable metal stent (cSEMS), or surgical treatment should be considered. Treatment with MPS improves the results of endoscopic treatment. In a study that included 48 patients with refractory stenosis treated with MPS for a mean of 6.8 months, resolution of the stenosis was achieved in 89.6 % of cases⁹. After a mean follow-up of 9.5 years, 74.4 % of these patients remained asymptomatic, with a stenosis recurrence rate of 7 %.

Alternatively, a cSEMS can be placed (Table 3). The results are encouraging in terms of stricture resolution and clinical success, but they carry a high rate of adverse events, especially *de novo* stenosis, secondary to the pressure exerted by the stent at its proximal end; and stent migration, which can reach 50 %.

Most of these studies were analyzed in a meta-analysis showing a 93 % stenosis resolution rate, regardless of whether the treatment was longer or shorter than 3 months; a stenosis recurrence of 5 %, and an overall adverse events rate of 34.9 %¹⁰. These adverse events included 14.1 % stent migration and 7.4 % *de novo* stenosis. The authors concluded that the treatment of pancreatic ductal stenosis with cSEMS was effective and with an acceptable rate of adverse effects.

In addition, the first experiences of treating pancreatic ductal stenosis with biodegradable stents have recently been published. These stents degrade over time and produce less ductal hyperplastic reaction thanks to their biocompatibility. Among their proposed advantages we would underline that the duration of their effect can be

predicted and that the ERCP to remove the stent can be avoided. Furthermore, stent removal would not be necessary in the event of proximal migration. One study included 19 patients with no improvement in pancreatic stenosis after at least 6 months with plastic stent treatment¹¹. The self-expanding biodegradable stent was correctly placed in all patients. Adverse events related to the procedure and the stent were reported in 21 %, and to the chronic pancreatitis disease in 42 %. There was 1 case of abdominal pain and another of jejunal perforation related to the procedure. Among the adverse events related to the stent and the underlying disease, we highlight the development of 1 case of *de novo* stenosis and another case of stent migration. Stenosis resolution and clinical success were reached in 58 % and 53 % respectively, after a 12-month follow-up. Therefore, although these stents appear to avoid the main adverse effects of cSEMS, new data are needed to define their role. In any case, in 10-30 % of patients it will not be possible to permanently remove the stents due to stenosis and pain recurrence, making it necessary periodic ERCP to replace the stents if there is no surgical alternative. The endoscopic alternative in such cases is EUS-guided ductal drainage.

PANCREATIC PSEUDOCYST

Spontaneous resolution of a pseudocyst in patients with chronic pancreatitis occurs in less than 10 % of cases. Drainage of symptomatic pseudocysts with abdominal pain, fever, symptoms of upper digestive tract obstruction, etc. is recommended. Pseudocysts that cause vascular or biliary compression, pancreato-pleural fistula, pseudocysts >5 cm that do not reduce in size after 6 weeks, pseudocysts with wall thickness >5 mm, and pseudocysts associated with significant distortion of the main pancreatic duct or pancreatolithiasis are admitted as a relative indication for drainage^{1,5}.

Endoscopic treatment has shown superiority over percutaneous and surgical treatment and it is the first choice¹. In a meta-analysis including 490 patients, endoscopic treatment obtained greater clinical success, lower reoperation rate, and shorter hospital stay than percutaneous treatment¹². However, most of the collections included in this meta-analysis were produced after an acute pancreatitis bout, in

patients without chronic pancreatitis.

On the other hand, compared with surgical treatment, endoscopic treatment offers similar results in terms of technical success, recurrence, and adverse events. In a randomized trial with 20 patients per arm, technical success (95 % vs 100 %), recurrence (0 vs 5 %), need for reoperation (5 % vs 5 %) and complications (0 % vs 10 %) of endoscopic and surgical treatment, were similar¹³. Hospital stay and costs were significantly lower with endoscopic treatment. Most of these pseudocysts did correspond to patients with chronic pancreatitis. Similar results have been described in a recent meta-analysis on this topic¹⁴.

Endoscopic drainage of pancreatic pseudocysts can be performed transpapillary, when they are <5 cm and communicated with the pancreatic duct, or transmurally, which should be EUS-guided¹. This allows a higher technical success rate, probably associated with a lower rate of adverse events¹⁵.

The type of stent to be used is not well defined. In case of pancreatic pseudocysts, with exclusively liquid content, it is commonly accepted that double-pigtail plastic stents are preferable over lumen-apposing metal stents, due to their lower cost, although several studies show better results with the latter. A retrospective study comparing the drainage of pseudocysts with lumen-apposing metal stents versus double-pigtail plastic stents, did not show significant differences in terms of technical success (97.5 % vs 99.2 %), need for surgery (1.3 % vs 4.9 %), post-procedure hospital stay (6.3 days vs 3.7 days) or pseudocyst recurrence at 6 months (6.7 % vs 18.8 %). However, lumen-apposing metal stents offered better results in terms of clinical success (96.3 % vs 87.2 %), need for percutaneous drainage (1.3 % vs 8.8 %) and adverse events (7.5 % vs 17.6 %)¹⁶.

Ductal pathology that could condition pseudocyst recurrence, such as ductal stenosis, ductal disconnection syndrome or pancreatic ductal lithiasis, should be ruled out before removing the stents. Magnetic resonance cholangiopancreatography generally allows to diagnose these conditions. If any of them is present, an ERCP should be performed before removing the stent, to avoid the pseudocyst recurrence. If the ductal pathology cannot be resolved by endoscopic treatment, surgical treatment should be considered⁵.

BILIARY STENOSIS

The reported incidence of biliary strictures in chronic pancreatitis varies between 3-46 %, since not all these strictures are associated with jaundice or they may be temporary. Biliary drainage is indicated in symptomatic cases, and in asymptomatic cases with an increase in alkaline phosphatase >2-3 times the upper limit of normal values, regardless of bilirubin levels, for more than 1 month^{4,5}.

Endoscopy, using MPS or cSEMS, is the first-choice treatment. In a randomized study comparing these two options, the success rate (88 % vs 90.9 % respectively) and the rate of adverse events (23 % vs 29 %) were similar¹⁷. In another randomized comparative study in which all types of benign biliary strictures were included, the stricture resolution rate was also similar, but with cSEMS it was achieved earlier (225 vs 181 days) and with less number of ERCP (3.24 vs 2, 14)¹⁸. There were no differences in terms of adverse events, but in this study patients with intact gallbladder, in which the cSEMS could have occluded the cystic duct outlet, were excluded.

A systematic review described higher stricture resolution rate with fewer ERCP procedures and adverse events in patients treated with cSEMS versus MPS¹⁹. Finally, in a study in which cSEMS treatment was performed for 10-12 months without scheduled replacements, more than 60 % of the patients remained free of symptoms and/or cholestasis up to 5 years later without additional interventions²⁰.

The recommended stenting duration is at least one year, with replacements every 6 months if cSEMS is chosen. The replacements should be done every 3-4 months if we opt for MPS, increasing the number of plastic stents to a maximum of 6 when possible and removing the occluded ones.

Therefore, it seems that cSEMSs offer some advantages over MPSs, although both treatments are currently accepted as equally valid. In our center we use both strategies, considering the gallbladder status when deciding between them.

If the stricture does not respond to endoscopic treatment or recurs in the subsequent first year, the surgical option should be considered⁵.

DUODENAL STENOSIS

Another local complication of chronic pancreatitis is duodenal stenosis secondary to groove pancreatitis or duodenal cystic dystrophy. This is a form of focal chronic pancreatitis characterized by inflammation of the paraduodenal area around the pancreatic head. In these cases, it is important to make a good differential diagnosis with duodenal stenosis secondary to pancreatic cancer⁵.

Conservative treatment, with analgesia, and alcohol and tobacco abstinence, is usually the first-line approach. Some patients require surgery, mostly a cephalic duodenopancreatectomy. However, few cases or small series of patients managed with endoscopic treatment have also been published

In a systematic review that includes 335 patients with groove pancreatitis, endoscopic treatment was performed in 62 patients (19 %)²¹. This treatment consisted on adjacent pseudocysts drainage (63 %), placement of a pancreatic (24 %) or biliary (16 %) stent, duodenal dilatation (8 %), or placement of a duodenal stent (2 %). 13 % of those patients developed adverse events, all of them controlled with conservative management.

The placement of a pancreatic stent through the minor papilla is considered the most effective endoscopic treatment since a possible cause of this entity could be the insufficient drainage of pancreatic secretion through the Santorini duct. This treatment is, however, technically challenging due to the duodenal inflammatory changes. Of the last seven cases with this entity treated by ERCP in our center, we were only able to place a stent through the minor papilla in one of them, leaving the stent through the major papilla in the other six.

EUS-GUIDED DUCTAL DRAINAGE

Most of the studies that evaluate the therapeutic role of endoscopy include patients treated by ERCP. However, in patients with pain due to ductal hyperpressure secondary to ductal stenosis and / or pancreatolithiasis, in whom ERCP fails and are not good surgical candidates, EUS-guided pancreatic ductal drainage can be considered. In our experience, we have also been able to verify the benefit of this technique in patients with pancreatic collections associated with complete ductal disruption.

By means of this technique, a transmural drainage is achieved communicating the pancreatic duct with the gastric or duodenal lumen, completing a pancreaticogastrostomy or pancreaticoduodenostomy respectively.

It is a complex technique that offers technical success of 76 % and development of adverse effects in 18.9 %²². A Spanish multicenter series that included 27 patients, reported an 85 % technical success rate²³. Adverse events were detected in 15 % of cases.

In our experience, this technique also offers an important advantage over ERCP since it is not necessary to perform periodic stent replacements. We maintain an on-demand replacement strategy. Following this policy, we have had to make stent exchanges in 15 % of cases after a follow-up period ranging from 1-9 years.

The latest published guidelines consider this technique as a therapeutic option applicable only in centers with adequate experience and support^{4,5}, but it is likely that it will play a relevant role in the future treatment algorithm for chronic pancreatitis.

In conclusion, thanks to the incorporation of new therapeutic options and the improvement of existing ones, endoscopy is accepted as first line in the treatment of chronic pancreatitis complications. Its efficacy is, in many patients, comparable to that of surgery with a low rate of adverse events. In addition, it can be performed repeatedly even in patients considered poor surgical candidates. When endoscopic treatment is not successful, it can serve as bridge to other surgical or non-surgical options.

CONFLICTS OF INTEREST

Juan J. Vila has lectured for Boston Scientific and Cook Medical, and is consultant for Boston Scientific.

The authors declare no other conflicts of interest.

REFERENCES

1. Dominguez-Munoz JE, Drewes AM, Lindkvist B, et al. Recommendations from the United European Gastroenterology evidence-based guidelines for the diagnosis and therapy of chronic pancreatitis. *Pancreatology*. 2018;18(8):847-854.

doi:10.1016/j.pan.2018.09.016

2. Gardner TB, Adler DG, Forsmark CE, Sauer BG, Taylor JR, Whitcomb DC. ACG Clinical Guideline: Chronic Pancreatitis. *Am J Gastroenterol.* 2020;115(3):322-339. doi:10.14309/ajg.0000000000000535
3. Issa Y, Kempeneers MA, Bruno MJ, et al. Effect of Early Surgery vs Endoscopy-First Approach on Pain in Patients With Chronic Pancreatitis: The ESCAPE Randomized Clinical Trial. *JAMA.* 2020;323(3):237-247. doi:10.1001/jama.2019.20967
4. Dumonceau JM, Delhaye M, Tringali A, et al. Endoscopic treatment of chronic pancreatitis: European Society of Gastrointestinal Endoscopy (ESGE) Guideline - Updated August 2018. *Endoscopy.* 2019;51(2):179-193. doi:10.1055/a-0822-0832
5. Kitano M, Gress TM, Garg PK, et al. International consensus guidelines on interventional endoscopy in chronic pancreatitis. Recommendations from the working group for the international consensus guidelines for chronic pancreatitis in collaboration with the International Association of Pancr. *Pancreatol.* July 2020. doi:10.1016/j.pan.2020.05.022
6. Han S, Shah RJ, Brauer BC, et al. A Comparison of Endoscopic Retrograde Pancreatography with or Without Pancreatoscopy for Removal of Pancreatic Duct Stones. *Pancreas.* 2019;48(5):690-697. doi:10.1097/MPA.0000000000001317
7. Watkins J, Mchenry L, Lehman GA, Fogel EL. Refractory Obstructing Chronic Calcific Pancreatitis. 2017;49(4):371-377. doi:10.1055/s-0042-120996.Clinical
8. Beyna T, Neuhaus H, Gerges C. Endoscopic treatment of pancreatic duct stones under direct vision: Revolution or resignation? Systematic review. *Dig Endosc.* 2018;30(1):29-37. doi:10.1111/den.12909
9. Tringali A, Bove V, Vadalà di Prampero SF, Boskoski I, Familiari P, Perri V CG. Long-term follow-up after multiple plastic stenting for refractory pancreatic duct strictures in chronic pancreatitis. *Endoscopy.* 2019;51(10):930-935.
10. Li TT, Song SL, Xiao LN, Wang CH. Efficacy of fully covered self-expandable metal stents for the management of pancreatic duct strictures in chronic pancreatitis: A systematic review and meta-analysis. *J Gastroenterol Hepatol.* 2020:0-3. doi:10.1111/jgh.14972

11. Cahen DL, van der Merwe SW, Laleman W, Poley JW, Bruno MJ. A biodegradable non-covered self-expandable stent to treat pancreatic duct strictures in chronic pancreatitis: a proof of principle. *Gastrointest Endosc.* 2018;87(2):486-491. doi:10.1016/j.gie.2017.08.018
12. Khan M, Hammad T, Khan Z, et al. Endoscopic versus percutaneous management for symptomatic pancreatic fluid collections: a systematic review and meta-analysis. *Endosc Int Open.* 2018;06(04):E474-E483. doi:10.1055/s-0044-102299
13. Varadarajulu S, Bang JY, Sutton BS, Trevino JM, Christein JD, Wilcox CM. Equal efficacy of endoscopic and surgical cystogastrostomy for pancreatic pseudocyst drainage in a randomized trial. *Gastroenterology.* 2013;145(3):583-590.e1. doi:10.1053/j.gastro.2013.05.046
14. Farias GFA, Bernardo WM, De Moura DTH, et al. Endoscopic versus surgical treatment for pancreatic pseudocysts: Systematic review and meta-analysis. *Medicine (Baltimore).* 2019;98(8):e14255. doi:10.1097/MD.00000000000014255
15. García García de Paredes A, López-Durán S, Foruny Olcina JR, Albillos A, Vázquez-Sequeiros E. Management of pancreatic collections: an update. *Rev Esp Enferm Dig.* 2020;112(6):483-490. doi:10.17235/reed.2020.6814/2019
16. Yang J, Chen Y-I, Friedland S, et al. Lumen-apposing stents versus plastic stents in the management of pancreatic pseudocysts: a large, comparative, international, multicenter study. *Endoscopy.* 2019;51(11):1035-1043. doi:10.1055/a-0759-1353
17. Haapamäki C, Kylänpää L, Udd M, et al. Randomized multicenter study of multiple plastic stents vs covered self-expandable metallic stent in the treatment of biliary stricture in chronic pancreatitis. *Endoscopy.* 2015;9:605-610. doi:10.1055/s-0034-1391331
18. Coté GA, Slivka A, Tarnasky P et al. Effect of Covered Metallic Stents Compared With Plastic Stents on Benign Biliary Stricture Resolution: A Randomized Clinical Trial. *JAMA.* 2016;315(12):1250–1257. doi:10.1016/j.physbeh.2017.03.040
19. Siiki A, Helminen M, Sand J, Laukkarinen J. Covered self-expanding metal stents may be preferable to plastic stents in the treatment of chronic pancreatitis-related biliary strictures: A systematic review comparing 2 methods of stent therapy in benign biliary strictures. *J Clin Gastroenterol.* 2014;48(7):635-643.

doi:10.1097/MCG.000000000000020

20. Lakhtakia S, Reddy N, Dolak W, et al. Long-term outcomes after temporary placement of a self-expanding fully covered metal stent for benign biliary strictures secondary to chronic pancreatitis. *Gastrointest Endosc.* 2020;91(2):361-369.e3. doi:10.1016/j.gie.2019.08.037
21. Kager LM, Lekkerkerker SJ, Arvanitakis M, et al. Outcomes after conservative, endoscopic, and surgical treatment of groove pancreatitis: A systematic review. *J Clin Gastroenterol.* 2017;51(8):749-754. doi:10.1097/MCG.0000000000000746
22. Chapman CG, Waxman I, Siddiqui UD. Endoscopic ultrasound (EUS)-guided pancreatic duct drainage: The basics of when and how to perform EUS-guided pancreatic duct interventions. *Clin Endosc.* 2016;49(2):161-167. doi:10.5946/ce.2016.011
23. Vila J, Pérez-Miranda M, Gornals J, et al. Pancreaticogastrostomía guiada por ecoendoscopia: análisis de su eficacia y manejo evolutivo. *Endoscopy.* 2016;48(12). doi:10.1055/s-0036-1593711
24. Howell DA, Dy RM, Hanson BL, Nezhad SF, Broaddus SB. Endoscopic treatment of pancreatic duct stones using a 10F pancreatoscope and electrohydraulic lithotripsy. *Gastrointest Endosc.* 1999;50(6):829-833. doi:10.1016/s0016-5107(99)70168-9
25. Fishman DS, Tarnasky PR, Patel SN, Raijman I. Management of pancreaticobiliary disease using a new intra-ductal endoscope: The Texas experience. *World J Gastroenterol.* 2009;15(11):1353-1358. doi:10.3748/wjg.15.1353
26. Maydeo A, Kwek BEA, Bhandari S, Bapat M, Dhir V. Single-operator cholangioscopy-guided laser lithotripsy in patients with difficult biliary and pancreatic ductal stones (with videos). *Gastrointest Endosc.* 2011;74(6):1308-1314. doi:10.1016/j.gie.2011.08.047
27. Alatawi A, Leblanc S, Vienne A, et al. Pancreatoscopy-guided intracorporeal laser lithotripsy for difficult pancreatic duct stones: a case series with prospective follow-up (with video). *Gastrointest Endosc.* 2013;78(1):179-183. doi:10.1016/j.gie.2013.02.015
28. Ito K, Igarashi Y, Okano N, et al. Efficacy of combined endoscopic lithotomy and extracorporeal shock wave lithotripsy, and additional electrohydraulic lithotripsy using

the SpyGlass direct visualization system or X-ray guided EHL as needed, for pancreatic lithiasis. *Biomed Res Int.* 2014;2014:732781. doi:10.1155/2014/732781

29. Attwell AR, Brauer BC, Chen YK, Yen RD, Fukami N, Shah RJ. Endoscopic retrograde cholangiopancreatography with per oral pancreatoscopy for calcific chronic pancreatitis using endoscope and catheter-based pancreatoscopes: a 10-year single-center experience. *Pancreas.* 2014;43(2):268-274. doi:10.1097/MPA.0b013e3182965d81

30. Navaneethan U, Hasan MK, Kommaraju K, et al. Digital, single-operator cholangiopancreatography in the diagnosis and management of pancreatobiliary disorders: a multicenter clinical experience (with video). *Gastrointest Endosc.* 2016;84(4):649-655. doi:10.1016/j.gie.2016.03.789

31. Bekkali NLH, Murray S, Johnson GJ, et al. Pancreatoscopy-Directed Electrohydraulic Lithotripsy for Pancreatic Ductal Stones in Painful Chronic Pancreatitis Using SpyGlass. *Pancreas.* 2017;46(4):528-530. doi:10.1097/MPA.0000000000000790

32. Ogura T, Okuda A, Imanishi M, et al. Electrohydraulic Lithotripsy for Pancreatic Duct Stones Under Digital Single-Operator Pancreatoscopy (with Video). *Dig Dis Sci.* 2019;64(5):1377-1382. doi:10.1007/s10620-018-5374-z

33. Ito K, Okano N, Hara S, et al. 10 Fr S-Type Plastic Pancreatic Stents in Chronic Pancreatitis Are Effective for the Treatment of Pancreatic Duct Strictures and Pancreatic Stones. *Gastroenterol Res Pract.* 2018;2018:6056379. doi:10.1155/2018/6056379

34. Cremer M, Devière J, Delhaye M, Baize M VA. Stenting in severe chronic pancreatitis: results of medium-term follow-up in seventy-six patients. *Endoscopy.* 1991;23(3):171-176.

35. Ponchon T, Bory RM, Hedelius F, et al. Endoscopic stenting for pain relief in chronic pancreatitis: Results of a standardized protocol. *Gastrointest Endosc.* 1995;42(5):452-456. doi:10.1016/S0016-5107(95)70049-8

36. Smits ME, Badiga SM, Rauws EA, Tytgat GN, Huibregtse K. Long-term results of pancreatic stents in chronic pancreatitis. *Gastrointest Endosc.* 1995;42(5):461-467. doi:10.1016/S0016-5107(95)70051-x

37. Cahen DL, Gouma DJ, Nio Y, et al. Endoscopic versus surgical drainage of the pancreatic duct in chronic pancreatitis. *N Engl J Med.* 2007;356(7):676-684. doi:10.1056/NEJMoa060610
38. Boursier J, Quentin V, Le Tallec V, et al. Endoscopic treatment of painful chronic pancreatitis: evaluation of a new flexible multiperforated plastic stent. *Gastroenterol Clin Biol.* 2008;32(10):801-805. doi:10.1016/j.gcb.2008.05.017
39. Park DH, Kim M-H, Moon S-H, Lee SS, Seo D-W, Lee S-K. Feasibility and safety of placement of a newly designed, fully covered self-expandable metal stent for refractory benign pancreatic ductal strictures: a pilot study (with video). *Gastrointest Endosc.* 2008;68(6):1182-1189. doi:10.1016/j.gie.2008.07.027
40. Sauer B, Talreja J, Ellen K, Ku J, Shami VM, Kahaleh M. Temporary placement of a fully covered self-expandable metal stent in the pancreatic duct for management of symptomatic refractory chronic pancreatitis: preliminary data (with videos). *Gastrointest Endosc.* 2008;68(6):1173-1178. doi:10.1016/j.gie.2008.06.011
41. Moon S-H, Kim M-H, Park DH, et al. Modified fully covered self-expandable metal stents with antimigration features for benign pancreatic-duct strictures in advanced chronic pancreatitis, with a focus on the safety profile and reducing migration. *Gastrointest Endosc.* 2010;72(1):86-91. doi:10.1016/j.gie.2010.01.063
42. Giacino C, Grandval P, Laugier R. Fully covered self-expanding metal stents for refractory pancreatic duct strictures in chronic pancreatitis. *Endoscopy.* 2012;44(9):874-877. doi:10.1055/s-0032-1309774
43. Matsubara S, Sasahira N, Isayama H, et al. Prospective pilot study of fully covered self-expandable metal stents for refractory benign pancreatic duct strictures: long-term outcomes. *Endosc Int open.* 2016;4(11):E1215-E1222. doi:10.1055/s-0042-115934
44. Ogura T, Onda S, Takagi W, et al. Placement of a 6 mm, fully covered metal stent for main pancreatic head duct stricture due to chronic pancreatitis: a pilot study (with video). *Therap Adv Gastroenterol.* 2016;9(5):722-728. doi:10.1177/1756283X16651855
45. Yamada T, Ogura T, Okuda A, et al. Pilot Study of Dumbbell-Type Covered Self-Expandable Metal Stent Deployment for Benign Pancreatic Duct Stricture (with

- Videos). *J Gastrointest Surg.* 2018;22(12):2194-2200. doi:10.1007/s11605-018-3901-z
46. Tringali A, Vadalà di Prampero SF, Landi R, et al. Fully covered self-expandable metal stents to dilate persistent pancreatic strictures in chronic pancreatitis: long-term follow-up from a prospective study. *Gastrointest Endosc.* 2018;88(6):939-946. doi:10.1016/j.gie.2018.08.019
47. Oh D, Lee JH, Song TJ, et al. Long-term outcomes of 6-mm diameter fully covered self-expandable metal stents in benign refractory pancreatic ductal stricture. *Dig Endosc.* 2018;30(4):508-515. doi:10.1111/den.13041
48. Korpela T, Udd M, Lindström O, Kylänpää L. Fully covered self-expanding metal stents for benign refractory pancreatic duct strictures in chronic pancreatitis. *Scand J Gastroenterol.* 2019;54(3):365-370. doi:10.1080/00365521.2019.1588366
49. Sharaiha RZ, Novikov A, Weaver K, et al. Fully covered self-expanding metal stents for refractory pancreatic duct strictures in symptomatic chronic pancreatitis, US experience. *Endosc Int open.* 2019;7(11):E1419-E1423. doi:10.1055/a-0858-2169
50. Lee YN, Moon JH, Park JK, et al. Preliminary study of a modified, nonflared, short, fully covered metal stent for refractory benign pancreatic duct strictures (with videos). *Gastrointest Endosc.* 2020;91(4):826-833. doi:10.1016/j.gie.2019.11.011

Table 1. Outcomes of patients with pancreatic stones managed by means of ERCP and lithotripsy.

Author/Year	Type of Study	Device	Method	N	Technical Success	Adverse Events
Howell et al. 1999 ²⁴	Case series	Olympus MBØ	EHL	6	83 %	0 %
Fishman et al. 2009 ²⁵	Retrospective	SpyGlassØ	EHL	6	50 %	0 %
Maydeo et al. 2011 ²⁶	Prospective	SpyGlassØ	LL	4	100 %	13,5 %
Alatawi et al. 2013 ²⁷	Prospective	SpyGlassØ	LL	5	80 %	0 %
Ito et al. 2014 ²⁸	Retrospective	SpyGlassØ	EHL	7	43 %	28 %
Attwell et al. 2014 ²⁹	Retrospective	Olympus MBØ vs SpyGlassØ	EHL/LL	46	68 % vs 73 %	10 %

Navaneethan et al. 2016 ³⁰	Retrospective	SpyGlassÒ	LL	5	80 %	0 %
Bekkali et al. 2017 ³¹	Retrospective	SpyGlassÒ	EHL	6	83 %	0 %
Ogura et al. 2019 ³²	Retrospective	SpyGlassÒ	EHL	21	85,7 %	4,7 %
Han et al. 2019 ⁶	Retrospective	Olympus MBÒ, SpyGlassÒ	EHL/LL	94	98,9 %	9,8 %

Table 2. Outcomes of the treatment of dominant pancreatic ductal stenosis with single 10F plastic stent.

Author and Year	n	Technical Success	Clinical Success ¹	Adverse Events	Follow up (months)
Ito et al. 2018 ³³	59	69,5 %	90,2 %	13 %	27
Cremer et al. 1991 ³⁴	75	100 %	---	5,3 %	37
Ponchon et al. 1995 ³⁵	23	100 %	52 %	43 %	12
Smits et al. 1995 ³⁶	51	96 %	55 %	18 %	34
Cahen et al. 2007 ³⁷	16	100 %	32 %	58 %	24
Boursier et al. 2008 ³⁸	13	100 %	85 %	10 %	11

¹Clinical success is evaluated at the end of follow up.

Table 3. Outcomes of the management of refractory pancreatic ductal stenosis with cSEMS.

Author/ Year	n	Mean duration of therapy	Estenosis of resolution	Clinical Success	Follow up (months)	Adverse Events
--------------	---	--------------------------	-------------------------	------------------	--------------------	----------------

		(months)	on	ss ¹		
Park et al. 2008 ³⁹	1 3	2	100 %	100 %	5	4 Migration 2 Cholestasis 3 Acute Pancreatitis
Sauer et al. 2008 ⁴⁰	6	3	67 %	33 %	4,25	No Complication
Moon et al. 2010 ⁴¹	3 2	3	100 %	90,6 %	5	5 <i>de novo</i> stenosis 3 Acute Pancreatitis
Giacino et al. 2012 ⁴²	1 0	5,7	100 %	90 %	19,8	2 Cholestasis
Matsubara et al. 2016 ⁴³	1 0	2,7	80 %	30 %	35	2 Migration 2 <i>de novo</i> stenosis 1 Pain 1 Acute Pancreatitis
Ogura et al. 2016 ⁴⁴	1 3	5,8	84,6 %	84,6 %	8,6	2 Migration 1 Pain
Yamada et al. 2018 ⁴⁵	2 2	4,7	86,3 %	86,3 %	13,9	1 <i>de novo</i> stenosis
Tringali et al. 2018 ⁴⁶	1 5	7,1	93,3 %	53,3 %	38,9	7 Migration 4 <i>de novo</i> stenosis 3 Acute Pancreatitis
Oh et al. 2018 ⁴⁷	1 8	7,5	83,3 %	72,2 %	47,3	3 Pain
Korpela et al. 2019 ⁴⁸	1 7	5,6	70,6 %	70,6 %	29	7 Migration 1 Cholestasis 4 Acute Pancreatitis
Sharaiha et al. 2019 ⁴⁹	3 3	3,5	100 %	87,1 %	14	2 Pain 2 Cholestasis
Lee et al. 2020 ⁵⁰	2	3,6	100 %	88 %	34	1 Migration

¹Clinical success is evaluated at the end of follow up.

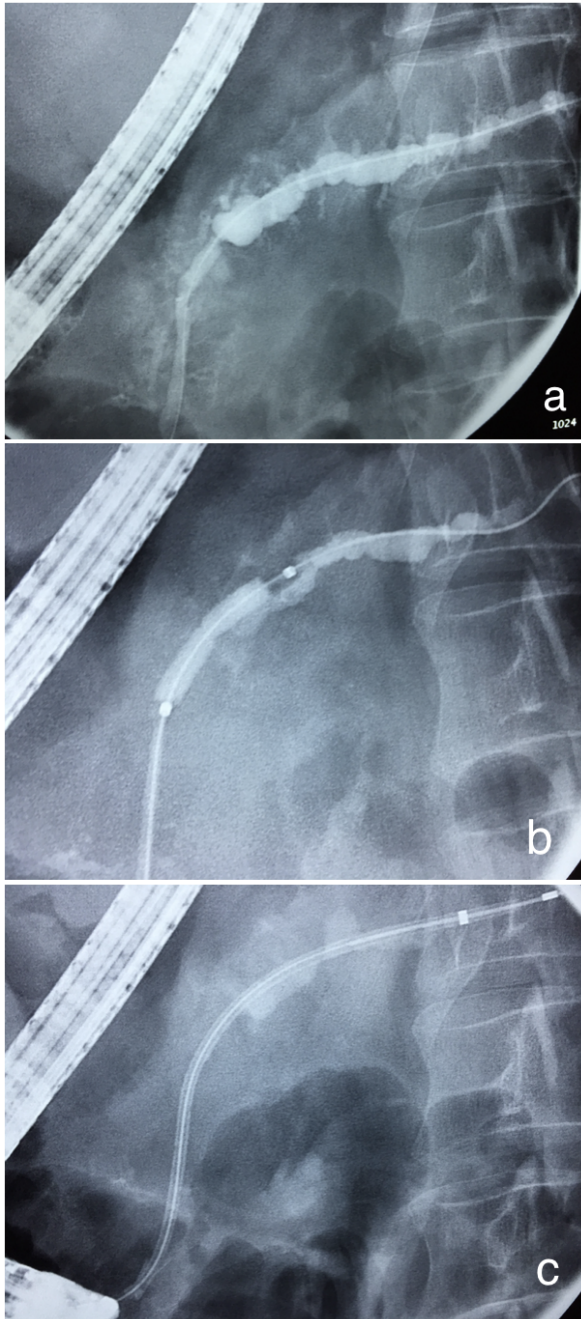


Figure 1. A focal stenosis in the pancreatic isthmus with retrograde dilation of the pancreatic duct, signs of chronic pancreatitis and normal distal duct can be seen in this pancreatogram (a). The stenosis is dilated to 4 mm (b). Since the cephalic duct has a normal caliber, a 7F caliber and 11 cm long stent is placed for stenosis dilation (c).

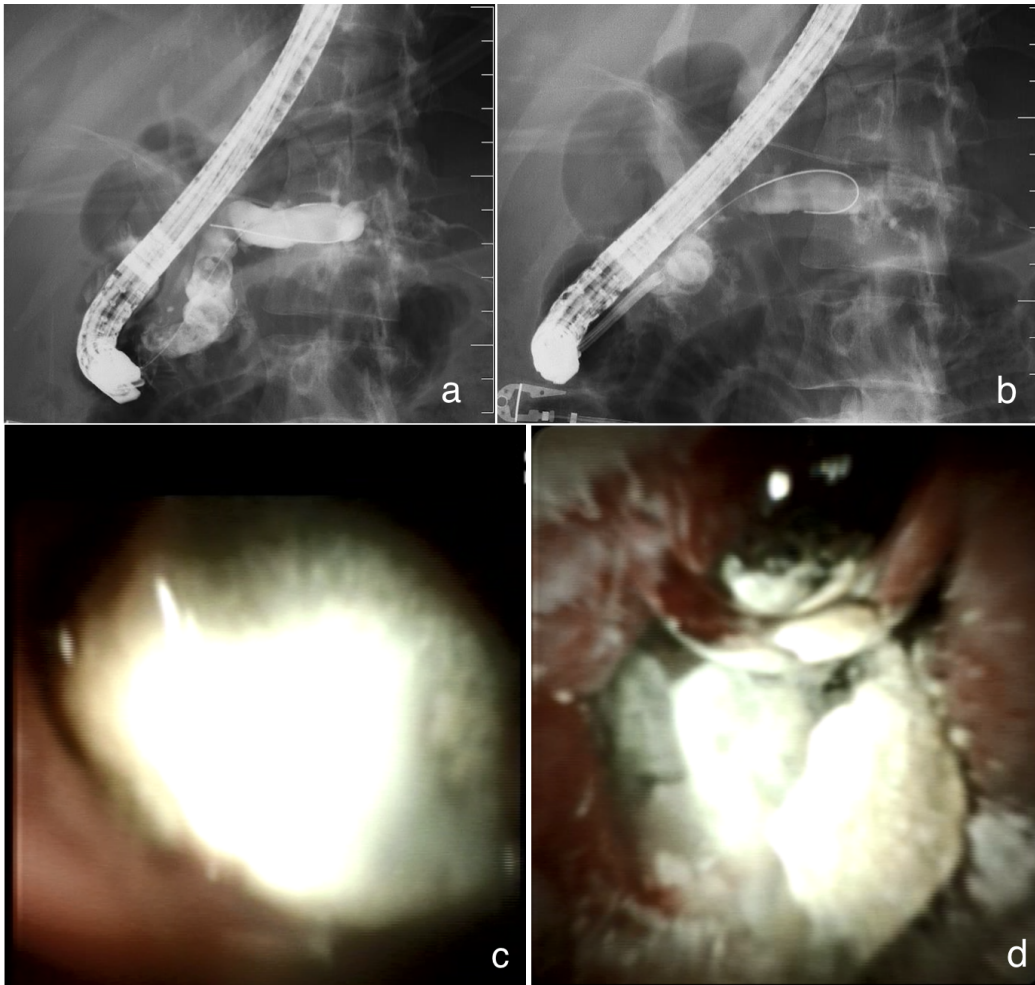


Figure 2. Patient with chronic pancreatitis, prepapillary stenosis and several large pancreatic stones (a). A pancreatoscope is advanced facing the distal stones (b). Endoscopic image of the pancreatic stones (c). Stone fragmentation after several shocks with EHL (d).