

# Long-Term Outcomes of Early Surgery vs Endoscopy First in Chronic Pancreatitis

## Follow-Up Analysis of the ESCAPE Randomized Clinical Trial

Charlotte L. van Veldhuisen, MD; Marinus A. Kempeneers, MD, PhD; Florence E. M. de Rijk, MD; Stefan A. Bouwense, MD, PhD; Marco J. Bruno, MD, PhD; Paul Fockens, MD, PhD; Jan W. Poley, MD, PhD; Usama Ahmed Ali, MD, PhD; Thomas L. Bollen, MD, PhD; Olivier R. Busch, MD, PhD; Peter van Duijvendijk, MD, PhD; Hendrik M. van Dullemen, MD; Casper H. van Eijck, MD, PhD; Harry Van Goor, MD, PhD; Muhammed Hadithi, MD; Jan-Willem Haveman, MD; Yolande Keulemans, MD; Vincent B. Nieuwenhuijs, MD; Alexander C. Poen, MD, PhD; Rogier P. Voermans, MD, PhD; Adriaan C. Tan, MD; Willem Thijs, MD; Robert C. Verdonk, MD; Ben J. Witteman, MD; Jeanin E. van Hooft, MD, PhD; Hjalmar C. van Santvoort, MD, PhD; Marcel G. Dijkgraaf, MD, PhD; Marc G. Besselink, MD, PhD; Marja A. Boermeester, MD, PhD; Yama Issa, MD, PhD; for the Dutch Pancreatitis Study Group

**IMPORTANCE** Patients with painful chronic pancreatitis and a dilated pancreatic duct can be treated by early surgery or an endoscopy-first approach.

**OBJECTIVE** To compare long-term clinical outcomes of early surgery vs an endoscopy-first approach using follow-up data from the ESCAPE randomized clinical trial.

**DESIGN, SETTING, AND PARTICIPANTS** Between April 2011 and September 2018, 88 patients with painful chronic pancreatitis were randomly assigned to early surgery or an endoscopy-first approach in 30 hospitals in the Netherlands collaborating in the Dutch Pancreatitis Study Group as part of the ESCAPE randomized clinical trial. For the present cohort study, long-term clinical data were collected after the initial 18-month follow-up. Follow-up was completed in June 2022, and data analysis was performed in June 2023.

**EXPOSURE** Patients with chronic pancreatitis were randomly assigned to early surgery or an endoscopy-first approach.

**MAIN OUTCOMES AND MEASURES** The primary end point was pain, assessed by the Izbicki pain score; secondary end points included patient-reported complete pain relief and satisfaction. Predefined subgroups included patients who progressed from endoscopy to surgery and those with ductal clearance obtained by endoscopy. Analysis was performed according to the intention-to-treat principle.

**RESULTS** In this cohort study, 86 of 88 overall patients could be evaluated, with a mean (SD) follow-up period of 98 (16) months. Of 88 initial patients, 21 patients (24%) were female, and mean (SD) patient age was 61 (10) years. At the end of long-term follow-up, the mean (SD) Izbicki pain score was significantly lower (33 [31] vs 51 [31]) in the early surgery group, as was the rate of patient-reported complete pain relief (14 of 31 patients [45%] vs 6 of 30 patients [20%]), compared to the endoscopy-first group. After the initial 18-month follow-up, 11 of 43 patients in the early surgery group (26%) underwent reinterventions vs 19 of 43 patients in the endoscopy-first group (44%). At the end of follow-up, more patients in the early surgery group were "very satisfied" with their treatment (22 of 31 patients [71%] vs 10 of 30 patients [33%]). Patients who progressed from endoscopy to surgery (22 of 43 patients [51%]) had significantly worse mean (SD) Izbicki pain scores (33 [31] vs 52 [24]) compared to the early surgery group and had a lower rate of complete pain relief (55% for early surgery vs 12% for endoscopy first). In the endoscopy-first group, patients with endoscopic ductal clearance had similar mean (SD) Izbicki pain scores as the remaining patients (49 [34] vs 53 [28]).

**CONCLUSIONS AND RELEVANCE** In this cohort study evaluating long-term outcomes of the ESCAPE randomized clinical trial, after approximately 8 years of follow-up, early surgery was superior to an endoscopy-first approach in patients with painful chronic pancreatitis and a dilated main pancreatic duct in pain scores and patient satisfaction. Notably, patients who progressed from endoscopy to surgery had worse outcomes compared to patients undergoing early surgery, and obtaining endoscopic ductal clearance did not improve outcomes.

JAMA Surg. 2025;160(2):126-133. doi:10.1001/jamasurg.2024.5182  
Published online November 20, 2024. Corrected on January 2, 2025.

← Invited Commentary page 133

+ Multimedia

+ Supplemental content

**Author Affiliations:** Author affiliations are listed at the end of this article.

**Group Information:** The Dutch Pancreatitis Study Group members appear in Supplement 2.

**Corresponding Authors:** Yama Issa, MD, PhD ([issayama@gmail.com](mailto:issayama@gmail.com)), and Marja Boermeester, MD, PhD, (m.a.boermeester@amsterdamUMC.nl), Department of Surgery, Amsterdam University Medical Center, University of Amsterdam, De Boelelaan 1117 (ZH-7F), Amsterdam 1081 HV, the Netherlands.

Abdominal pain is the predominant clinical symptom in many patients with chronic pancreatitis, resulting in poor quality of life.<sup>1-6</sup> The mechanism for this pain is complex and poorly understood. Obstruction of the pancreatic duct, resulting in increased pressure, is thought to cause abdominal pain. Several studies have shown that surgical and endoscopic ductal decompression reduce abdominal pain and should be considered before the development of opioid dependence and neuropathic pain, which is the result of postponing interventions.<sup>7-10</sup> Traditionally, pain symptoms have been treated by medical treatment (eg, opioids) first and, when unsuccessful, endoscopic therapy, with surgery often reserved as a last resort. However, early surgery has been proposed as an alternative strategy to improve pain, quality of life, and pancreatic function in an early stage.<sup>11-18</sup>

The initial report of the ESCAPE multicenter randomized clinical trial at 18 months follow-up found early surgery superior to an endoscopy-first approach in patients with painful chronic pancreatitis in terms of pain scores.<sup>19,20</sup> However, it has been questioned whether the favorable outcomes of early surgery are sustainable in the long term. In addition, many centers still start with an endoscopy-first approach, as this is considered less invasive than abdominal surgery, and because subgroup analysis of the initial ESCAPE trial showed no benefit of surgery when endoscopic complete ductal clearance was achieved. Consequently, an endoscopy-first approach is typically advised to patients if complete ductal clearance is considered feasible. However, it is also unknown how this approach influences patient outcomes in the long term. A longer duration of pain might result in central sensitization for pain and a decrease in the benefit of future surgery.

Therefore, we compared the long-term outcomes of patients with painful chronic pancreatitis randomized to either early surgery or an endoscopy-first approach in the ESCAPE randomized clinical trial. Outcomes were also assessed in 3 subgroups: (1) patients who progressed from endoscopy to surgery, (2) patients with endoscopic complete ductal clearance, and (3) trends in pain scores over time.

## Methods

### Study Design

Between April 2011 and September 2018, 88 patients with symptomatic chronic pancreatitis were enrolled in the ESCAPE multicenter randomized clinical trial.<sup>19</sup> Patients with a dilated main pancreatic duct who only recently started using opioids for pain (within 6 months for weak opioids and 2 months for strong opioids) were eligible for inclusion. (Details on treatment are summarized in the initial report of the ESCAPE trial).<sup>19</sup> The study was conducted in 30 hospitals in the Netherlands collaborating in the Dutch Pancreatitis Study Group. Patients were randomly assigned 1:1 to early surgery (n = 44) and the endoscopy-first approach (n = 44). In the endoscopy-first group, lifestyle modifications and medical treatment were the first step, endoscopic therapy the second step, and surgical intervention the last step. In the early surgery group, patients were treated surgically after randomization.

### Key Points

**Question** In patients with painful chronic pancreatitis with dilated pancreatic duct, does an early surgical approach result in improved clinical outcomes compared with an endoscopy-first approach?

**Findings** In this cohort study, long-term outcomes of the ESCAPE randomized clinical trial were evaluated in 86 patients during a mean (SD) follow-up period of 98 (16) months. Early surgery resulted in a lower mean (SD) pain score (33 [31] vs 51 [31]), a higher rate of complete pain relief (55% vs 12%), and increased patient satisfaction (71% vs 33%) at the end of follow-up.

**Meaning** In patients with painful chronic pancreatitis with dilated pancreatic duct, early surgery resulted in superior outcomes compared with an endoscopy-first approach.

### Long-Term Follow-Up Protocol and Data Collection

Eligible patients were evaluated at 1 single measurement moment in June 2022, following the initial ESCAPE longitudinal 18-month follow-up. After obtaining written informed consent, clinical data were retrieved retrospectively from medical records or via treating specialists or general practitioners. The choice of additional treatment (ie, type and timing of interventions) was left to the treating medical team, as no particular follow-up criteria were formulated to guide physicians' decisions.

### Outcomes

The primary end point for this follow-up study was pain, assessed by the Izbicki pain score.<sup>21</sup> Secondary end points included the visual analogue scale (VAS) score, complete pain relief, quality of life, disease progression, pancreatic insufficiency (ie, exocrine and endocrine), hospital admissions, reinterventions for chronic pancreatitis, complications following interventions, and death. Furthermore, the use of medication for exocrine and endocrine pancreatic insufficiency was evaluated through a questionnaire. In addition, patients were asked if they would recommend the assigned treatment to both family and friends, and surgically treated patients were asked if they would have preferred to undergo the treatment earlier in the course of disease. Quality of life was evaluated by the Medical Outcomes Study 36-Item Short-Form General Health Survey (SF-36),<sup>22</sup> subdivided into physical and mental summary measures. The primary and secondary end points for this long-term follow-up study were prespecified in the study protocol.

End points were assessed for the period after the trial's initial longitudinal 18-month follow-up until the end of long-term follow-up ("new events after the initial 18-month follow-up") for all surviving patients after the initial follow-up who consented to participate in the current long-term follow-up study. Separately, all events between the time of randomization and the end of long-term follow-up ("total follow-up") were reported, including patients who died in the initial 18-month follow-up and excluding patients who did not consent to participate in this study. This will provide a complete overview of and accurate comparison between the 2 treatment groups.

## Definitions

All definitions were according to the initial ESCAPE trial and are explained in detail in eTable 1 in Supplement 1.

## Subgroups

Three post hoc subgroup analyses were performed<sup>1</sup>: (1) patients who progressed to surgery in the endoscopy-first group,<sup>2</sup> (2) patients with endoscopic complete ductal clearance, and (3) trends in pain scores over time.<sup>3</sup>

## Statistical Analysis

The analysis was performed according to the intention-to-treat principle. Additional post hoc per-protocol analyses were performed for the primary end point and for pain relief, quality of life, and VAS scores in patients with and without duct clearance. End points were expressed as means and SDs or as medians with interquartile ranges, depending on the distributional properties. For normally distributed continuous data, statistical significance was assessed using *t* tests. For non-normally distributed continuous data, the Mann-Whitney *U* test was performed. For categorical data, the Pearson  $\chi^2$  test was used or the Fisher exact test in case of 0-count cells. All reported *P* values are 2 sided, and a *P* value less than .05 was considered statistically significant. *P* values were not adjusted for multiple testing. All statistical analyses were conducted with SPSS version 28.0 (IBM).

## Ethics Approval

The medical ethics committee of Amsterdam University Medical Center approved the study protocol of this long-term follow-up study. The study followed the Strengthening the Reporting of Observational Studies in Epidemiology (STROBE) reporting guidelines and was conducted in accordance with the principles of the Declaration of Helsinki.<sup>23</sup>

## Results

### Patients

In total, 88 patients with painful chronic pancreatitis were randomized in the ESCAPE trial, of which 2 patients did not provide informed consent for the present study, leaving a total of 86 patients for analysis (Figure)—43 patients in the early surgery group and 43 patients in the endoscopy-first group. The mean (SD) total length of follow-up was 98 (16) months. Of 88 initial patients, 21 patients (24%) were female. The follow-up period was 10 years or more in 7 patients, 5 to 10 years in 65 patients, and less than 5 years in 14 patients.

During follow-up, a total of 23 patients died: 11 patients in the early surgery group (26%) and 12 patients in the endoscopy-first group (28%) (relative risk [RR], 0.92; 95% CI, 0.46-1.85; *P* = .81). Two patients died because of new-onset pancreatic cancer, and the other deaths were not directly related to chronic pancreatitis or its complications (details in eTable 2 in Supplement 1). At the end of long-term follow-up, questionnaires were obtained from 61 patients (31 early surgery and 30 endoscopy-first patients). Current smoking was reported in 24 of 31 patients in the early surgery group (77%) and in 16 of 30

patients in the endoscopy-first group (53%) (*P* = .05), and current alcohol use was reported in 9 patients in the early surgery group (29%) vs 5 patients in the endoscopy-first group (17%) (*P* = .15). Baseline characteristics originated from the ESCAPE trial and were comparable between groups (eTable 3 in Supplement 1). All patients had full and equal access to endoscopic and surgical treatment for chronic pancreatitis during the follow-up period.

### Patient-Reported Outcomes and Pancreatic Function

At the end of long-term follow-up, the mean (SD) Izbicki pain score was superior in the early surgery group (33 [31]) compared to the endoscopy-first group (51 [31]; *P* = .03). More patients reported complete pain relief in the early surgery group (14 of 31 patients [45%]) than in the endoscopy-first group (6 of 30 patients [20%]; *P* = .04), and the mean (SD) VAS score for pain was lower in the early surgery group (29 [29] vs 47 [31]; *P* = .02). Quality of life and pancreatic function were similar in both physical and mental summary measures. At the end of long-term follow up, 22 patients in the early surgery group (71%) vs 10 patients in the endoscopy-first approach (33%) reported they were “very satisfied” with the overall treatment (*P* = .003), and 27 patients (87%) vs 14 patients (47%), respectively, would recommend the received treatment to family and friends (*P* < .001). Primary and secondary end points are summarized in Table 1.

### New Events and Reinterventions After the Initial 18-Month Follow-Up

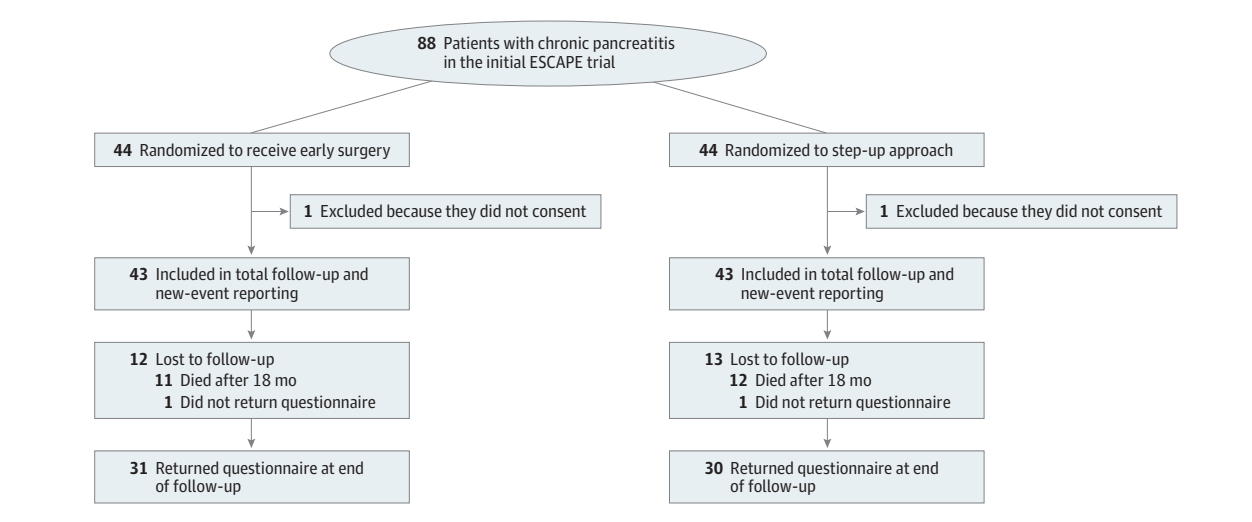
Additional interventions (ie, endoscopy and surgery) were required in 11 patients in the early surgery group (26%) and 19 patients in the endoscopy-first approach (44%) (RR, 0.06; 95% CI, 0.31-1.09; *P* = .07). There were no differences between the early surgery and endoscopy-first groups regarding the formation of pseudocysts, chronic opioid use, flare-ups, hospital admissions, and hospital and intensive care unit stay (Table 2).

In the early surgery group at long-term follow-up, 9 (additional) patients (21%) underwent endoscopic treatment—8 patients due to a stricture of the common bile duct and 1 patient due to common bile duct stones. Surgical treatment was required in 2 patients: 1 explorative laparotomy was performed due to persistent abdominal discomfort (which turned out to be metastatic pancreatic cancer), and 1 laparotomy was performed due to a perforation of the duodenojejunostomy after repositioning of the percutaneous endoscopic gastrostomy (eTable 4 in Supplement 1).

In the endoscopy-first approach during long-term follow-up, 14 patients (33%) underwent additional endoscopic treatment, and a further 9 patients (21%) also underwent surgery (eTable 5 in Supplement 1).

The total number of additional procedures per treatment group after the initial follow-up period was 19 procedures in the early surgery group vs 57 procedures in the endoscopy-first group (*P* = .03; eTables 4 and 5 in Supplement 1). The rate of treatment-related complications was higher in the endoscopy-first group (2 patients [5%] vs 12 patients [28%]; RR, 0.17; 95% CI, 0.40-0.70; *P* = .007). More details on interventions are outlined in eTables 4 and 5 in Supplement 1.

Figure. Trial Profile



### Total Follow-Up

During the total follow-up (combining the initial 18 months and the current additional long-term follow-up), 40 of 43 patients in the early surgery group (93%) underwent surgical treatment for chronic pancreatitis, and 13 patients (30%) underwent endoscopic reintervention after having received surgery. In the endoscopy-first approach, 39 of 43 patients (91%) underwent endoscopic treatment, and 22 patients (51%) progressed from endoscopy to surgery.

The occurrence of pseudocysts, chronic opioid use, chronic pancreatitis flare-ups, number of hospital admissions, and duration of hospital (and intensive care unit) stay was similar between treatment groups (Table 2).

Significantly fewer median (IQR) interventions per patient were required in the early surgery group (1 procedure [1-2]) than the endoscopy-first group (4 procedures [2-5]). Overall, the rate of complications did not differ significantly (early surgery, 14 patients [33%] vs endoscopy first, 19 patients [44%]; RR, 0.74; 95% CI, 0.43-1.27;  $P = .27$ ). All deaths occurred after the initial 18-month follow-up and were similar, as previously reported.

### Subgroup 1: Surgery in the Endoscopy-First Group

Of 61 patients who completed the survey at the end of follow-up, 45 patients underwent surgical treatment during follow-up for chronic pancreatitis: 28 patients in the early surgery group and 17 patients in the endoscopy-first group. Patients treated in the early surgery group reported a lower mean (SD) pain score at the end of long-term follow-up (33 [31] vs 52 [24]) (eTable 6 in Supplement 1). Of 17 patients treated by endoscopy first who progressed to surgery, the rate of complete pain relief was 12% vs 55% in the early surgery group. These differences were confirmed by mean (SD) VAS scores (29 [29] vs 50 [30]), whereas quality of life did not differ between these 2 groups (eTable 6 in Supplement 1).

### Subgroup 2: Endoscopic Complete Ductal Clearance

During the initial ESCAPE trial, complete ductal clearance was achieved by endoscopy in 24 of 39 patients in the endoscopy-first group (62%). Of these 39 patients, 28 were still alive at the end of long-term follow-up. The mean (SD) Izbicki pain score at the end of long-term follow-up did not significantly differ between patients with and without ductal clearance (49 [34] vs 53 [28], respectively). Also, no significant differences were seen in complete pain relief, VAS score, quality of life, and interventions per patient based on ductal clearance (eTable 7 in Supplement 1). Patients in the early surgery group had improved outcomes compared to patients with ductal clearance in the endoscopy-first group, although these improvements only reached statistical significance for VAS score (29 [29] vs 48 [34];  $P = .047$ ) (eTable 8 in Supplement 1).

### Subgroup 3: Trends in Pain Scores Over Time

Looking at the pain scores at baseline, 18-month follow-up, and end of long-term follow-up, mean (SD) pain scores in the early surgery group remained similar compared with the scores at 18-month follow-up (29 [30]) and the end of long-term follow-up (32 [30]). In the endoscopy-first group, pain scores worsened over time (39 [34] at 18-month follow-up vs 49 [29] at the end of long-term follow-up) (eTable 9 in Supplement 1). Differences for the first and second half of follow-up (participants were grouped by first or second 50%, to avoid a time bias) are provided in eTable 10 in Supplement 1.

## Discussion

This approximately 8-year follow-up of the ESCAPE multicenter randomized clinical trial in patients with painful chronic pancreatitis and a dilated main pancreatic duct found early surgery superior over an endoscopy-first approach. Patients in the early surgery group had persistently lower pain scores and a

Table 1. Primary and Secondary End Points at Final Follow-Up

Outcome	Patients at end of long-term follow-up, No. (%)		
	Early surgery (n = 31)	Endoscopy-first approach (n = 30)	P value
<b>Primary end point</b>			
Izbicki pain score at end of follow up, mean (SD)	33 (31)	51 (31)	.03
<b>Secondary end points</b>			
Complete pain relief	14 (45)	6 (20)	.04
VAS score pain, mean (SD)	29 (29)	47 (31)	.02
SF-36 Quality of Life score, mean (SD)			
Physical health scale	45 (12)	42 (12)	.39
Mental health scale	42 (7)	42 (8)	.75
<b>Pancreatic function</b>			
Exocrine insufficiency <sup>a</sup>	25 (81)	26 (87)	.53
Endocrine insufficiency <sup>b</sup>	20 (64)	19 (63)	.92
<b>Smoker</b>			
Current	24 (77)	16 (53)	.05
Past	7 (23)	14 (47)	
Never	0	0	
<b>Alcohol consumption</b>			
Current	9 (29)	5 (17)	.15
Past	21 (68)	20 (67)	
Never	1 (3)	5 (17)	
<b>Satisfaction result</b>			
Very satisfied	22 (71)	10 (33)	.003
Partly satisfied	8 (26)	16 (53)	
Not satisfied	1 (3) <sup>c</sup>	4 (13)	
Would recommend treatment to family or friend	27 (87)	14 (47)	<.001

Abbreviations: SF-36, Medical Outcomes Study 36-Item Short-Form General Health Survey; VAS, visual analogue scale.

<sup>a</sup> Exocrine pancreatic function was assessed by the fecal elastase-1 function test, and a level less than 200 µg/g was defined as exocrine insufficient.

<sup>b</sup> Endocrine insufficiency was determined by the use of diabetes medication.

<sup>c</sup> Of all patients who underwent surgery.

Table 2. End Points in Patients After Early Surgery vs Optimal Step-Up Approach for Chronic Pancreatitis<sup>a</sup>

End point	Events during initial 18-mo follow-up, No. (%)		New events after the initial 18-mo follow-up, No. (%) <sup>a</sup>		Total follow-up (between randomization and the end of long-term follow-up) <sup>b</sup>			P value
	Early surgery (n = 44)	Endoscopy-first approach (n = 44)	Early surgery (n = 43)	Endoscopy-first approach (n = 43)	Early surgery (n = 43)	Endoscopy-first approach (n = 43)	Relative risk (95% CI)	
<b>Secondary end point</b>								
<b>Disease progression</b>								
Pseudocysts	2 (5)	6 (14)	4 (9)	3 (7)	5 (12)	9 (21)	0.56 (0.20-1.52)	.33
Chronic opioid use	20 (47)	26 (60)	12 (28)	12 (28)	25 (58)	30 (70)	0.83 (0.61-1.15)	.26
Chronic pancreatitis flare-up	18 (41)	20 (46)	13 (30)	13 (30)	25 (58)	27 (63)	0.93 (0.66-1.30)	.66
No. of flare-ups, median (IQR)	0 (0-1)	0 (0-1)	0 (0-1)	0 (0-1)	1 (0-2)	1 (0-2)	NA	.53
No. of hospital admissions, median (IQR)	2 (1-2)	2 (1-4)	0 (0-1)	0 (0-2)	2 (1-4)	3 (2-5)	NA	.08
Hospital stay, median (IQR), d	11 (7-15)	10 (2-19)	0 (0-5)	0 (0-12)	13 (8-21)	17 (6-35)	NA	.63
Interventions per patient, median (IQR)	1 (1-1)	3 (2-4)	0 (0-1)	0 (0-2)	1 (1-2)	4 (2-5)	NA	<.001
No. of endoscopic procedures, median (IQR)	0 (0-0)	3 (1-4)	0 (0-0)	0 (0-1)	0 (0-1)	3 (2-5)	NA	<.001
No. of surgical procedures, median (IQR)	1 (1-1)	0 (0-1)	0 (0-0)	0 (0-1)	1 (1-1)	1 (0-1)	NA	<.001
<b>No. of reinterventions</b>								
0	NA	NA	32 (74)	24 (56)	NA	NA	NA	NA
1	NA	NA	8 (18)	7 (16)	NA	NA	NA	NA
≥2	NA	NA	3 (7)	12 (28)	NA	NA	NA	NA
No. of patients with treatment complications	12 (27)	11 (25)	2 (5)	12 (28)	14 (33)	19 (44)	0.74 (0.43-1.27)	.27
Mortality	0	0	11 (26)	12 (28)	11 (26)	12 (28)	0.92 (0.46-1.85)	.81

Abbreviation: NA, not applicable.

<sup>a</sup> Excluding events as reported in the ESCAPE randomized clinical trial. Multiple events in the same patient were scored as 1 end point.

<sup>b</sup> Two patients (of 88 originally included patients) from the ESCAPE trial did not consent to participate in this follow-up study and were therefore missing in the total follow-up analysis.

higher rate of complete pain relief (45% vs 20%). Early surgery also resulted in increased patient satisfaction and fewer reinterventions compared to an endoscopy-first approach. Notably, patients who ultimately progressed from endoscopy to surgery had worse outcomes (based on Izbicki pain score, complete pain relief, and VAS scores) than patients assigned up-front to early surgery. Notably, endoscopic ductal clearance (often mentioned as rationale for and feasible target of an endoscopy-first approach) was not associated with improved outcomes, which differs from the initial trial report and may be explained by worsening pain scores over time after endoscopy.

These results are in accordance with 2 previous randomized clinical trials,<sup>11,24</sup> which reported improved outcomes with surgical treatment compared to endoscopy in patients with painful chronic pancreatitis. Both trials, however, enrolled patients in a later stage of their disease course. The international consensus guideline for surgery in chronic pancreatitis<sup>9</sup> supports early surgery over surgery at a more advanced stage of disease to achieve optimal long-term pain relief. Furthermore, a cost analysis in the ESCAPE trial also found early surgery more cost-effective than an endoscopy-first approach.<sup>25</sup>

However, in clinical practice, many patients with painful chronic pancreatitis and a dilated main pancreatic duct still start with an endoscopy-first approach. How can this be explained? For one, surgical treatment has traditionally been considered the more invasive approach. However, endoscopy results in a higher number of reinterventions and increased burden to the patient.<sup>26,27</sup> Importantly, our study provides evidence of superior patient satisfaction with early surgical treatment compared to endoscopy first. Second, many patients with pancreatitis may not be referred to specialized centers, where patients are discussed among a multidisciplinary team (including, for example, gastroenterologists, surgeons, radiologists, and anesthesiologists). Third, the (initial) lack of consensus on timing of surgery in patients with chronic pancreatitis may have contributed to an initial conservative approach. With the current evidence and recent guidelines,<sup>8,9,28</sup> clinical practice may now increasingly change toward a surgery-first approach.

Most patients in the early surgery group were adequately treated by 1 single operation (26 of 43 patients [60%]), contrasted with only 5 of 43 patients treated by the endoscopy-first approach (12%), who generally underwent multiple procedures. In 22 of 43 patients (51%), in line with the literature, endoscopic treatment failed and conversion to surgery was required—13 patients during the initial trial and another 9 patients who required additional surgical intervention for chronic pancreatitis during long-term follow-up. Although not statistically significant, more patients needed reinterventions in the endoscopy-first group (11 vs 19 patients) after the initial 18-month follow-up. It is relevant to note that the damage of the pancreatic tissue (ie, exocrine and endocrine insufficiency) was not improved by surgical and endoscopic intervention(s), as it did not differ between the 2 groups at the end of long-term follow-up.<sup>29</sup> Furthermore, again in line with literature,<sup>30,31</sup> at the end of follow-up, 23 patients (27%) had died. The poor long-term survival of patients with chronic pancreatitis has been related to comorbidity and the association with cancer.

Pain scores were not only significantly different between the 2 groups during the initial 18-month follow-up,<sup>19</sup> but remained superior for surgery at the end of the long-term follow-up period spanning more than 8 years. In fact, after the initial 18-month follow-up, pain scores worsened further in the endoscopy-first group. Interestingly, the original ESCAPE trial reported that the proportion of complete pain relief at 18-month follow-up was not significantly different between the 2 groups. However, after longer follow-up, complete pain relief was clearly and significantly superior in the early surgery group (45% vs 20%), which contradicts the theory that early surgery is primarily beneficial in the short term.

Although the numbers of patients were small, our study showed that surgical treatment in the early surgery group resulted in lower pain scores, higher complete pain relief, and lower VAS scores compared to patients in the endoscopy-first group who progressed to surgery. However, it is not possible to identify a similar subgroup in the surgery-first group, so no formal comparison can be made.

Interestingly, endoscopic complete ductal clearance (of the main pancreatic duct) did not affect the outcomes at long-term follow-up with regards to pain scores. This is clinically relevant, as it has been previously suggested that if ductal clearance seems obtainable, an endoscopic approach should still be advised, despite the original ESCAPE trial results. Again, some caution is required, as this was not the primary comparison of the trial. On the other hand, all patients randomized in the ESCAPE trial were eligible for endoscopic treatment. In the short term, endoscopic ductal clearance may be effective. However, in the long term, the disease will progress and new strictures and stones will develop, leading to recurrent obstruction and symptoms. A confirmation of this important finding would require a new trial randomizing only patients with high likelihood of complete endoscopic ductal clearance between early surgery and endoscopy first with pancreatoscopy-guided therapy.

### Limitations

The present study has several limitations, which should be considered when interpreting the results. First, the long-term follow-up period was not standardized, and as a result, the duration of follow-up differed between the first and last randomized patient, ranging from 128 to 51 months, respectively. However, outcomes did not differ when outcomes within groups were compared for the first and second half of follow-up. Second, a single measurement point (June 2022) was used for pain evaluation in this study in contrast to the initial analyses, which were based on multiple longitudinal measurements. Consequently, interpretation of these results should be done with caution, since it is known that pain patterns differ, and therefore, a single measure does not always reflect the situation adequately.<sup>32</sup> However, to proactively account for this limitation, patients were asked to fill out the questions regarding their pain over the last 6 months instead of over a shorter period (eg, 2 weeks). Third, some data were collected retrospectively, such as information on interventions and readmission, which may have led to information bias. Fourth, the choice for timing and type of additional intervention after the

initial 18 months of follow-up was based on institutional or physician preference, which may have led to different strategies.

## Conclusions

In this cohort study, based on a mean (SD) follow-up period of 98 (16) months of the ESCAPE randomized clinical trial, in patients with symptomatic chronic pancreatitis and a dilated main pancreatic duct, early surgery was superior to an endoscopy-first approach in terms of Izbicki pain scores, number of reinterventions, VAS scores, and patient satisfac-

tion. Opioid use at the end of follow-up was comparable between the groups. Notably, endoscopic complete ductal clearance did not improve patient outcomes. Also, outcomes were worse if patients underwent surgery after failed endoscopy compared to up-front early surgery. The current results demonstrate that frequently used arguments for an endoscopy-first approach (eg, less invasive, ductal clearance may be obtained, surgery can always be done later) do not hold up. The present findings clearly strengthen the recommendation that early surgery should be the preferred approach for these patients and leave little room for an endoscopy-first approach.

### ARTICLE INFORMATION

**Accepted for Publication:** September 8, 2024.

**Published Online:** November 20, 2024.

doi:10.1001/jamasurg.2024.5182

**Correction:** This article was corrected on January 2, 2025, to correct an error incorrectly identifying the article as Open Access and a misspelling in the byline. The correct spelling is Muhammed Hadithi.

**Author Affiliations:** Department of Surgery, Amsterdam University Medical Center, University of Amsterdam, Amsterdam, the Netherlands (van Veldhuisen, Kempeneers, Busch, Besselink, Boermeester, Issa); Amsterdam Gastroenterology Endocrinology Metabolism, Amsterdam, the Netherlands (van Veldhuisen, Fockens, Voermans, Besselink, Boermeester, Issa); Department of Research and Development, St Antonius Hospital, Nieuwegein, the Netherlands (van Veldhuisen, de Rijk, van Santvoort); Department of Surgery, Maastricht University Medical Center, Maastricht, the Netherlands (de Rijk, Bouwense); Department of Gastroenterology and Hepatology, Erasmus University Medical Center, Rotterdam, the Netherlands (Bruno); Department of Gastroenterology and Hepatology, Amsterdam University Medical Center, University of Amsterdam, Amsterdam, the Netherlands (Fockens, Voermans); Department of Gastroenterology and Hepatology, Maastricht University Medical Center, Maastricht, the Netherlands (Poley); Division of Colorectal Surgery, Columbia University Irving Medical Center/ New York Presbyterian Hospital, New York, New York (Ali); Department of Radiology, St Antonius Hospital, Nieuwegein, the Netherlands (Bollen); Department of Surgery, Gelre Hospitals, Apeldoorn, the Netherlands (van Duijvendijk); Department of Gastroenterology and Hepatology, University Medical Center Groningen, Groningen, the Netherlands (van Dullemen); Department of Surgery, Erasmus University Medical Center, Rotterdam, the Netherlands (van Eijck); Department of Surgery, Radboud University Medical Center, Nijmegen, the Netherlands (Van Goor); Department of Gastroenterology and Hepatology, Maasstad Hospital, Rotterdam, the Netherlands (Hadithi); Department of Surgery, University Medical Center Groningen, University of Groningen, Groningen, the Netherlands (Haveman); Department of Gastroenterology and Hepatology, Zuyderland Hospital, Sittard, the Netherlands (Keulemans); Department of Surgery, Isala Hospital, Zwolle, the Netherlands (Nieuwenhuijs); Department of Gastroenterology and Hepatology, Isala Hospital, Zwolle,

the Netherlands (Poen); Department of Gastroenterology and Hepatology, Canisius-Wilhemina Hospital, Nijmegen, the Netherlands (Tan); Department of Gastroenterology and Hepatology, Martini Hospital, Groningen, the Netherlands (Thijs); Department of Gastroenterology and Hepatology, St Antonius Hospital, Nieuwegein, the Netherlands (Verdonk); Department of Gastroenterology and Hepatology, Gelderse Vallei Hospital, Ede, the Netherlands (Wittevan); Department of Gastroenterology and Hepatology, Leiden University Medical Center, Leiden, the Netherlands (van Hooft); Department of Surgery, St Antonius Hospital, Nieuwegein, the Netherlands (van Santvoort); Department of Clinical Epidemiology, Biostatistics, and Bioinformatics, Amsterdam University Medical Center, University of Amsterdam, Amsterdam, the Netherlands (Dijkgraaf); Amsterdam Public Health, Amsterdam, the Netherlands (Dijkgraaf).

**Author Contributions:** Drs van Veldhuisen, Dijkgraaf, and Issa had full access to all of the data in the study and take responsibility for the integrity of the data and the accuracy of the data analysis. Drs Van Veldhuisen and Kempeneers share first authorship, and Drs Boermeester and Issa share senior authorship.

**Concept and design:** Kempeneers, de Rijk, Bouwense, Bruno, Fockens, Ahmed Ali, van Duijvendijk, van Eijck, Van Goor, Tan, Verdonk, van Hooft, van Santvoort, Dijkgraaf, Besselink, Boermeester, Issa.

**Acquisition, analysis, or interpretation of data:** van Veldhuisen, Kempeneers, Bruno, Fockens, Poley, Ahmed Ali, Bollen, Busch, van Dullemen, van Eijck, Van Goor, Hadithi, Haveman, Keulemans, Nieuwenhuijs, Poen, Voermans, Tan, Thijs, Wittevan, van Hooft, van Santvoort, Dijkgraaf, Besselink, Issa.

**Drafting of the manuscript:** van Veldhuisen, Kempeneers, Bruno, Hadithi, Voermans, Tan, van Hooft, Besselink, Issa.

**Critical review of the manuscript for important intellectual content:** van Veldhuisen, Kempeneers, de Rijk, Bouwense, Bruno, Fockens, Poley, Ahmed Ali, Bollen, Busch, van Duijvendijk, van Dullemen, van Eijck, Van Goor, Hadithi, Haveman, Keulemans, Nieuwenhuijs, Poen, Voermans, Tan, Thijs, Verdonk, Wittevan, van Santvoort, Dijkgraaf, Besselink, Boermeester, Issa.

**Statistical analysis:** van Veldhuisen, Ahmed Ali, Dijkgraaf.

**Obtained funding:** Ahmed Ali, Dijkgraaf, Besselink, Boermeester.

**Administrative, technical, or material support:** van Veldhuisen, Kempeneers, de Rijk, Bruno, Ahmed

Ali, Poen, Voermans, van Santvoort, Besselink. **Supervision:** Kempeneers, Bouwense, Bruno, Fockens, Poley, Busch, van Duijvendijk, Van Goor, Haveman, Nieuwenhuijs, Voermans, Tan, Verdonk, van Hooft, Besselink, Boermeester, Issa.

**Conflict of Interest Disclosures:** Dr Bruno reported grants from Boston Scientific, InterScope, and Mylan and personal fees from Ambu, Cook Medical, and Pentax Medical outside the submitted work. Dr Fockens reported consulting fees from Olympus and Cook Medical outside the submitted work. Dr van Eijck reported personal fees from AIM ImmunoTech outside the submitted work. Dr Voermans reported consultancy fees from Boston Scientific and Cook Medical and speaking fees from Viatrix outside the submitted work. Dr van Hooft reported personal fees from Boston Scientific, Cook Medical, Fuijfilm, and Olympus outside the submitted work. Dr Boermeester reported institutional grants from 3M/Solventum and Johnson & Johnson; speaking fees from BD; consultancy and speaker fees from Mölnlycke Health Care and Smith & Nephew; instructor fees from TelaBio; and consultancy fees for AngioDynamics outside the submitted work. No other disclosures were reported.

**Funding/Support:** No funding was obtained for the current study. The original ESCAPE trial was funded by grants from the Netherlands Organization for Health Research and Development (ZonMw, 17110216) and the Dutch Digestive Diseases Foundation (WO10-21, Maag Lever Darm Stichting).

**Role of the Funder/Sponsor:** The funders had no role in the design and conduct of the study; collection, management, analysis, and interpretation of the data; preparation, review, or approval of the manuscript; or decision to submit the manuscript for publication.

**Group Information:** The Dutch Pancreatitis Study Group members appear in the [Supplement 2](#).

**Data Sharing Statement:** See [Supplement 3](#).

### REFERENCES

- Mullady DK, Yadav D, Amann ST, et al; NAPS2 Consortium. Type of pain, pain-associated complications, quality of life, disability and resource utilisation in chronic pancreatitis: a prospective cohort study. *Gut*. 2011;60(1):77-84. doi:10.1136/gut.2010.213835
- Olesen SS, Juel J, Nielsen AK, Frøkjær JB, Wilder-Smith OH, Drewes AM. Pain severity reduces life quality in chronic pancreatitis: implications for design of future outcome trials. *Pancreatology*. 2014;14(6):497-502. doi:10.1016/j.pan.2014.09.009

3. Layer P, Yamamoto H, Kalthoff L, Clain JE, Bakken LJ, DiMagno EP. The different courses of early- and late-onset idiopathic and alcoholic chronic pancreatitis. *Gastroenterology*. 1994;107(5):1481-1487. doi:10.1016/0016-5085(94)90553-3
4. Ammann RW, Akovbiantz A, Largiader F, Schueler G. Course and outcome of chronic pancreatitis. longitudinal study of a mixed medical-surgical series of 245 patients. *Gastroenterology*. 1984;86(5 pt 1):820-828. doi:10.1016/S0016-5085(24)05129-1
5. Cavallini G, Frulloni L, Pederzoli P, et al. Long-term follow-up of patients with chronic pancreatitis in Italy. *Scand J Gastroenterol*. 1998;33(8):880-889. doi:10.1080/00365529850171567
6. Lankisch PG, Lohr-Happe A, Otto J, Creutzfeldt W. Natural course in chronic pancreatitis. pain, exocrine and endocrine pancreatic insufficiency and prognosis of the disease. *Digestion*. 1993;54(3):148-155. doi:10.1159/000201029
7. Bouwense SA, Ahmed Ali U, ten Broek RP, et al. Altered central pain processing after pancreatic surgery for chronic pancreatitis. *Br J Surg*. 2013;100(13):1797-1804. doi:10.1002/bjs.9322
8. Lohr JM, Dominguez-Munoz E, Rosendahl J, et al; HaPanEU/UEG Working Group. United European Gastroenterology evidence-based guidelines for the diagnosis and therapy of chronic pancreatitis (HaPanEU). *United European Gastroenterol J*. 2017;5(2):153-199. doi:10.1177/2050640616684695
9. Kempeneers MA, Issa Y, Ali UA, et al; Working group for the International (IAP - APA - JPS - EPC) Consensus Guidelines for Chronic Pancreatitis. International consensus guidelines for surgery and the timing of intervention in chronic pancreatitis. *Pancreatol*. 2020;20(2):149-157. doi:10.1016/j.pan.2019.12.005
10. Vege SS, Chari ST. Chronic pancreatitis. *N Engl J Med*. 2022;386(9):869-878. doi:10.1056/NEJMcip1809396
11. Dite P, Ruzicka M, Zboril V, Novotný I. A prospective, randomized trial comparing endoscopic and surgical therapy for chronic pancreatitis. *Endoscopy*. 2003;35(7):553-558. doi:10.1055/s-2003-40237
12. Cahen DL, Gouma DJ, Nio Y, et al. Endoscopic versus surgical drainage of the pancreatic duct in chronic pancreatitis. *N Engl J Med*. 2007;356(7):676-684. doi:10.1056/NEJMoa060610
13. Drewes AM, Kempeneers MA, Andersen DK, et al. Controversies on the endoscopic and surgical management of pain in patients with chronic pancreatitis: pros and cons! *Gut*. 2019;68(8):1343-1351. doi:10.1136/gutjnl-2019-318742
14. Singh VK, Yadav D, Garg PK. Diagnosis and management of chronic pancreatitis: a review. *JAMA*. 2019;322(24):2422-2434. doi:10.1001/jama.2019.19411
15. Negi S, Singh A, Chaudhary A. Pain relief after Frey's procedure for chronic pancreatitis. *Br J Surg*. 2010;97(7):1087-1095. doi:10.1002/bjs.7042
16. Croome KP, Tee M, Nagorney DM, et al. Pancreatoduodenectomy for chronic pancreatitis—results of a pain relief and quality of life survey 15 years following operation. *J Gastrointest Surg*. 2015;19(12):2146-2153. doi:10.1007/s11605-015-2928-7
17. Kempeneers MA, van Hemert AKE, van der Hoek M, et al. Short- and long-term outcomes of selective use of Frey or extended lateral pancreaticojejunostomy in chronic pancreatitis. *Br J Surg*. 2022;109(4):363-371. doi:10.1093/bjs/znab473
18. Pessaux P, Kianmanesh R, Regimbeau JM, et al. Frey procedure in the treatment of chronic pancreatitis: short-term results. *Pancreas*. 2006;33(4):354-358. doi:10.1097/01.mpa.0000236736.77359.3a
19. Issa Y, Kempeneers MA, Bruno MJ, et al; Dutch Pancreatitis Study Group. Effect of early surgery vs endoscopy-first approach on pain in patients with chronic pancreatitis: the ESCAPE randomized clinical trial. *JAMA*. 2020;323(3):237-247. doi:10.1001/jama.2019.20967
20. Ahmed Ali U, Issa Y, Bruno MJ, et al; Dutch Pancreatitis Study Group. Early surgery versus optimal current step-up practice for chronic pancreatitis (ESCAPE): design and rationale of a randomized trial. *BMC Gastroenterol*. 2013;13:49. doi:10.1186/1471-230X-13-49
21. Izbicki JR, Bloechle C, Broering DC, Kuechler T, Broelsch CE. Longitudinal V-shaped excision of the ventral pancreas for small duct disease in severe chronic pancreatitis: prospective evaluation of a new surgical procedure. *Ann Surg*. 2008;227(2):213-219. doi:10.1097/0000658-199802000-00010
22. Ware JE Jr, Sherbourne CD. The MOS 36-item short-form health survey (SF-36). I. conceptual framework and item selection. *Med Care*. 1992;30(6):473-483. doi:10.1097/0000650-199206000-00002
23. World Medical Association. World Medical Association Declaration of Helsinki. ethical principles for medical research involving human subjects. *Bull World Health Organ*. 2001;79(4):373-374.
24. Cahen DL, Gouma DJ, Laramée P, et al. Long-term outcomes of endoscopic vs surgical drainage of the pancreatic duct in patients with chronic pancreatitis. *Gastroenterology*. 2011;141(5):1690-1695. doi:10.1053/j.gastro.2011.07.049
25. Kempeneers MA, Issa Y, Bruno MJ, et al; Dutch Pancreatitis Study Group. Cost-effectiveness of early surgery versus endoscopy-first approach for painful chronic pancreatitis in the ESCAPE trial. *Ann Surg*. 2023;277(4):e878-e884. doi:10.1097/SLA.0000000000005240
26. Rutter K, Ferlitsch A, Sautner T, et al. Hospitalization, frequency of interventions, and quality of life after endoscopic, surgical, or conservative treatment in patients with chronic pancreatitis. *World J Surg*. 2010;34(11):2642-2647. doi:10.1007/s00268-010-0713-z
27. Strobel O, Büchler MW, Werner J. Surgical therapy of chronic pancreatitis: indications, techniques and results. *Int J Surg*. 2009;7(4):305-312. doi:10.1016/j.ijsu.2009.05.011
28. Dumonceau JM, Delhaye M, Tringali A, et al. Endoscopic treatment of chronic pancreatitis: European Society of Gastrointestinal Endoscopy (ESGE) Guideline - updated August 2018. *Endoscopy*. 2019;51(2):179-193. doi:10.1055/a-0822-0832
29. Bouwense SAW, Kempeneers MA, van Santvoort HC, Boermeester MA, van Goor H, Besselink MG. Surgery in chronic pancreatitis: indication, timing and procedures. *Visc Med*. 2019;35(2):110-118. doi:10.1159/000499612
30. Seicean A, Tantău M, Grigorescu M, Mocan T, Seicean R, Pop T. Mortality risk factors in chronic pancreatitis. *J Gastrointest Liver Dis*. 2006;15(1):21-26.
31. Wilson GC, Turner KM, Delman AM, et al. Long-term survival outcomes after operative management of chronic pancreatitis: two decades of experience. *J Am Coll Surg*. 2023;236(4):601-610. doi:10.1097/XCS.0000000000000575
32. Kempeneers MA, Issa Y, Verdonk RC, et al; Dutch Pancreatitis Study Group. Pain patterns in chronic pancreatitis: a nationwide longitudinal cohort study. *Gut*. 2021;70(9):1724-1733. doi:10.1136/gutjnl-2020-322117

## Invited Commentary

## Surgery-First for Painful Chronic Pancreatitis

Ville Sallinen, MD, PhD; Arto Kokkola, MD, PhD; Pauli Puolakkainen, MD, PhD

**The treatment** of painful chronic pancreatitis (CP) with a dilated pancreatic duct has often included early endoscopy to decompress the duct by stents, while surgery has been saved as a last resort. However, recently at least 3 randomized clinical trials have challenged this step-up approach and demonstrated superiority of early surgery over first-line endoscopy.<sup>1-3</sup> Yet, clinical practice and guideline recommendations seem to be slow to reflect this change in evidence.<sup>4,5</sup> As endoscopic procedures are usually performed by gastroenterologists (and surgery obviously by surgeons), the debate between the 2 first-line treatment options is also a debate between the specialties, both looking at the

evidence from their own perspectives and incentives. As Abraham Maslow wrote: “It is tempting, if the only tool you have is a hammer, to treat everything as if it were a nail.”

In this issue of *JAMA Surgery*, Van Veldhuisen et al<sup>6</sup> report long-term outcomes of the ESCAPE trial. The results strongly support early surgery in treating painful CP as patients who had surgery first had lower pain scores, higher rate of complete pain relief, increased satisfaction, less reinterventions, and similar rates of exocrine and endocrine insufficiency. The initial ESCAPE trial,<sup>3</sup> with 18 months follow-up, did not find a clear benefit of surgery compared with patients in whom complete ductal clearance was achieved using endoscopic means. This might have affected the broad perception